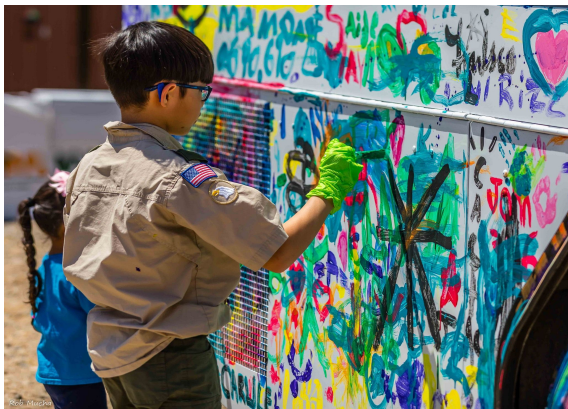




# We Are Temescal Valley Newsletter

## May 2025



2024 Temescal Valley Faire photos courtesy of Rob Mucha featuring BMX stunt riding, Paint a RTA Bus, and rock climbing at Tom's Farms

## TEMESCAL HERITAGE FOUNDATION PRESENTS 22ND ANNUAL TEMESCAL VALLEY COMMUNITY FAIRE

**Why** a community faire? Twenty five years ago, Temescal Valley was entering a period of rapid growth with plans announced to build Trilogy, Sycamore Creek, The Retreat, Montecito Ranch, Painted Hills and Temescal Valley Elementary School. A small group of residents felt the need for some type of annual event that would bring together families and friends, and local businesses for a fun filled, all-day "meet and greet" to learn more about the unincorporated community, its service providers, and the development companies behind these soon to be built neighborhoods. Until the faire was established, Temescal Valley had no organized family events happening within its boundaries. Well-known businesswoman Joyce Deleo was the driving force behind the faire until her death in 2011. The event was held each year at the family's Temescal Driving Range. In 2013, the faire was moved to Deleo Regional Sports Park, a county park named in Joyce's honor. The faire this year will be held at Tom's Farms 23900 Temescal Canyon Road, Temescal Valley, 92883. It remains the annual single-largest event held in Temescal Valley. In 2019, in conjunction with the Bicentennial Faire, we added a 5k- 10k Race to the days events. The race starts ant Deleo Regional Sports Park, a few hours prior to faire. Registration is available online or in person (Friday 5/16 from 6p – 8p at the Deleo Park)

The Temescal Heritage Foundation was created in 2001 after the first Temescal Valley Community Faire in 2000. In order to encourage business sponsorships, the Temescal Heritage Foundation was established as a non-profit 501(c)(3) organization. The mission of the foundation is to preserve, promote and protect the unique history, community and environment of Temescal Valley. The current Board of Directors: President Sam Yoo, Vice President Tracy Davis, Secretary Bob Hafner, Treasurer Deborah Chrastil, and Membership Chairman Carol Soliday. *(continued on page 2)*

## MORE INSIDE:

- A Fire Safe Council for TV
- General Plan Updates for Chandler Aggregate & RJ Noble
- Jannlee Watson Heritage Park
- Emergency Preparedness
- El Sobrante Landfill Emergency Waiver for Increased Tonnage

---

# TEMESCAL VALLEY FAIRE RETURNS

*(Continued from Front Page)* Some in the past complained about the faire not being enough but remember, we are all volunteers... Our Temescal Heritage Foundation committee is comprised of 15-20 people that volunteer each a few hundred hours, from January till the event in May. Tasks are sponsorship, entertainment, insurance, food trucks, race, marketing, contests (leads on each: pet show, watermelon, art, photo), business/county exhibitors, budget, crafts/games and volunteer coordinator. The committee works over 8 hours to set up on Friday and Saturday works 12 hours to start up the race and faire and finish with a clean slate at 6 p.m. By end of faire, we have all put in 15-20,000 steps (6-10 miles). We do this because we love Temescal Valley.

On Faire day we have several groups that receive donations from Temescal Heritage Foundation for those who bring in 10 or more volunteers. Boy Scout Troop 13 has been a longtime group, this year delivered Faire flyers door to door in the Horsethief Canyon Ranch and Lemon Grove communities, serviced by Elsinore Valley Municipal Water District. Corona - Norco Branch of Assistance League sends us ample volunteers to help out in the Welcome and Watermelon booths. Project Touch gets the big prize with 25-30 volunteers. Those men and women are overcoming homelessness through the programs of Project Touch.

Without sponsorships, we would not be able to fund the Faire. Special thanks to Tom's Farms, Ranpac, WM/El Sobrante, Shea Properties, SCE, Werner Corp, ICI- Toscana Village, Supervisor Karen Spiegel – District 2, Glen Ivy Spa, LW Developers LLC, Toro Energy, Maitri Road Recycling, Laguna Clay, Proficiency Capital- Dawson and Temescal Valley Water District.

**Hope it's another great year at Tom's Farms. See you there!**

---

## A FIRE SAFE COUNCIL FOR TEMESCAL VALLEY? SEEKING A GROUP OF NEW VOLUNTEERS

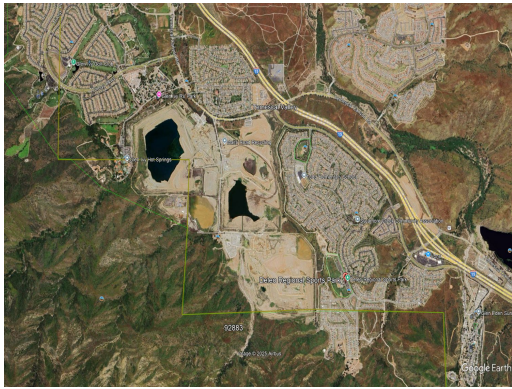


A Fire Safe Council is a community-based organization that works to focus on wildfire prevention and mitigation efforts. The volunteer council works to protect lives, homes, and natural resources by educating the public, collaborating with local fire agencies, and implementing projects like fuel reduction. Many Fire Safe Councils have successfully implemented such projects as hazardous-fuel-reduction projects, Community Wildfire Protection Planning, and homeowner training. As a bonus, a Fire Safe Council designation can help lower your homeowner's insurance costs!

Shortly after the Holy Fire in 2018, the community was given a brief presentation from Cal-Fire about the program. Without solid volunteer backing, the program was shelved. Given the impacts of fire in the entire region, it may be time to revisit this idea – preferably new neighbors who may want to get involved but aren't sure how! A core group would form the group, elect a board, and begin the process of either establishing a 501.3c or temporarily entering an agreement for fiscal sponsorship. Cal-Fire has great resources specifically about the Fire Safe Council program and our newsletter team is happy to help assist in the process to get this off the ground, including securing funding for the program.

Check out some local councils in the Southern California area for additional information and what could be brought forward here; Southwest Riverside County Fire Safe Council - <https://www.swrcfsc.org>, Fallbrook Fire Safe Council - <https://fallbrookfiresafecouncil.org>, and Escondido Fire Safe Council - <https://www.fscswesco.com> for ideas of what this could look like and what value this could bring to Temescal Valley.

## GENERAL PLAN UPDATES FOR DEVELOPMENT WITHIN TEMESCAL VALLEY



*Proposed areas of the GPA240030 project*

### *Proposed changes in the Chandler mining operation footprint & RJ Noble footprint reviewed by the county of Riverside - TD*

The General Plan Amendment Changes (GPAC) directors hearing marks the final changes to the foundation for the 2024 cycle – a cycle that happens once every seven years in the county to change foundational designations for development. We had two foundation changes in Temescal Valley, both discussed on Monday, May 12th.

The first plan amendment that was discussed was for the property most currently known as Chandler mining operations. This change was presented as:

[GPA240030](#) to change the General Plan Foundation Component of eleven (11) parcels from Open Space: Mineral Resources (OS:MIN) and Open Space: Conservation (OS:C) to Community Development: Light Industrial (CD:LI) Community Development: Business Park (CD:BP), Community Development: Mixed, Use Area (CD:MUA), Community Development: Commercial Retail (CD:CR), Open Space: Recreation (OS:R), and Open Space: Conservation (OS:C) to allow for submittal of an application of a Specific Plan to allow for the development of flex industrial / manufacturing space, warehouse and logistics uses, neighborhood scale retail, industrial office, and potential housing within a central Mixed Use core.

In layman's terms this indicates that the 230.8 acres of mined land will feature four new Community Development areas. There will be a shopping center situated across from Butterfield Estates, and a mixed-use development with potential housing located opposite Serrano homes at the intersection of Juni Court. An office business park would be situated along Maitri Road, behind the shopping center. Lastly, there would be light industrial development to serve as a buffer from the operational mining area. This represents only a foundational change, specifically in basement zones. Given the reclamation timeline and the mining process, these developments will occur in phases over several decades, with the mixed-use and housing phase expected to commence in the next few years.

At the hearing, three individuals from the Temescal Valley community spoke on the proposal, with two supporting the Community Development and Open Space areas. One resident advocated for 30% Open Space in accordance with the upcoming California regulations. The General Plan Amendment committee approved the recommendation, which will proceed to the next stage with the full planning commission.

The second proposed amendment presented for Temescal Valley at this meeting was for RJ Noble, the asphalt batch plant which requested a zone change to light industrial. This change was proposed as:

[GPA240062](#) General Plan Foundation Component of a portion of one (1) parcel from Open Space: Mineral Resources (OS:MIN) to Community Development: Light Industrial (CD:LI), to allow for submittal of an application to continue the operation of an existing asphalt plant and associated ancillary supporting facilities and uses, and for future use of equipment sales, rental, and storage of similar uses as allowed. Additional development applications and review by the County to confirm that the overall project complies with applicable standards, policies, findings, and other requirements will be required if the proposed GPA240062 is initiated by the Board of Supervisors. – Second Supervisorial District – Glen Ivy Zoning Area/District – Temescal Canyon Area Plan – Applicant: Austin Carver c/o R.J Noble – Engineer / Representative: Andrew White c/o Benchmark Resources – Existing Zoning: M-R-A (Mineral Resources & Related Manufacturing) – Existing Land Use: Mineral Resources (OS:MIN) – Location: north of Riverside/Orange County Border, east of Cobb Drive, south of Temescal Canyon Road, and west of Maitri Road – APN(s): 290-110-020 – 33.52 Gross Acres.

This foundational change isn't all that it seems – the proposal is an attempt by the applicant to come to compliance with new buildings and expansions that were built outside of approval between 2017 and 2019, outside of the guidelines of their current surface mining permit. The process has been a continued journey and was covered by the [March 2020 We Are Temescal Valley Newsletter](#). *(continued on next page)*





New park signage honoring Jannlee - photo courtesy of Rob Mucha

# JANNLEE HERITAGE PARK DEDICATION IN WILD ROSE

On what would have been Jannlee Watson's 81st birthday, Wild Rose Ranch HOA dedicated the park in her honor. The park is located at Knabe Road and Clay Canyon Drive in Temescal Valley. Over 70 guests attended the unveiling of the new signage. The event was hosted by the Wild Rose Ranch Homeowners Association with an assist from the Temescal Heritage Foundation, who invited El Guero Y La Flaca to BBQ at the park for guests.

Jannlee Watson was a long-term resident of the Wild Rose Ranch community. She met & organized the community first as a neighbor, then as President of the HOA, and then as a leader of the Temescal Valley Heritage foundation and We are Temescal Valley up until her passing in July of 2024.

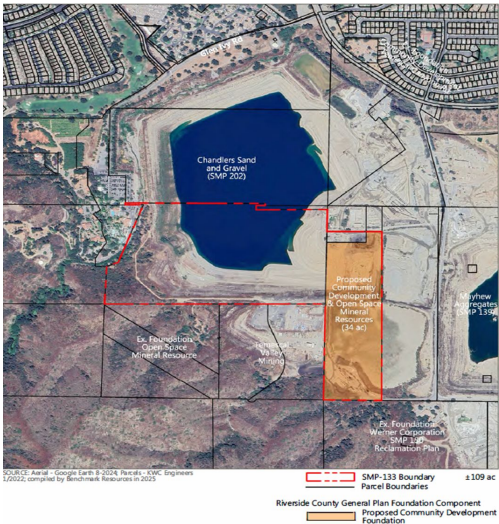


Left - Wildrose HOA Board, Right - Nick Moldovan, Jannlee’s son, speaks to the attendees

# GENERAL PLAN UPDATES

Continued from Page 3

Three Temescal Valley residents spoke to concerns that past issues of the asphalt batch plant need to be addressed before allowing a light industrial foundation change in a space where existing medium or heavy industrial batch plant current sits. The two GPAC committee members agreed with the public and denied the recommendation for the foundation zone change. The denial was followed with notation that RJ Noble representatives prepare for a full planning hearing with a presentation explaining the 2019 permitting issues and how those were resolved before moving any further.



Proposal adjacent to Deleo Regional Park



RJ Noble as currently built in Temescal Valley

# EL SOBRANTE LANDFILL EMERGENCY WAIVER EXTENDED TO AID WILDFIRE RECOVERY EFFORTS

Following the initial Emergency Waiver granted in January due to the Palisades Fire, the Riverside County Department of Environmental Health Local Enforcement Agency (LEA) has approved a revision and extension of the waiver for the El Sobrante Landfill. This decision comes in response to ongoing regional landfill needs stemming from multiple wildfires, including the Palisades, Eaton, Hurt, Lidia, Sunset, and Woodley Fires, as outlined in Executive Order N-5-25.

The extension, effective from May 10th through September 7th, 2025, will allow the El Sobrante Landfill to continue serving as an alternative regional disposal facility. **As of the date of this publication, El Sobrante Landfill has not received any fire debris from the Palisades or Eaton fires and does not have a timeline of when the materials may be received.** The adjustment in the waiver is allowing El Sobrante to take in additional non-fire debris that would have been routed to other landfills that are currently accepting wildfire debris.

The revised waiver includes the following key provisions:

**Redirected Waste Only:** The landfill will only accept redirected Municipal Solid Waste (MSW) from regional landfills impacted by the fires, ensuring daily operations at El Sobrante are not unduly strained.

**Phase 8 Restrictions:** To address ongoing Subsurface Elevated Temperature (SET) events, no new waste will be placed in Phase 8 or within 300 feet of its boundary until these events are resolved.

**Traffic Mitigation:** El Sobrante Landfill is required to coordinate with relevant agencies to minimize traffic impacts on surrounding areas.

The LEA retains the right to modify, cancel, or revoke the waiver if it poses a public health or environmental hazard, if its terms are not being used for the intended redirection of MSW related to the specified fires, or if the emergency need no longer exists.

To ensure compliance, El Sobrante Landfill will submit a report to the LEA every 90 days from the waiver's effective date. Additionally, weekly tonnage reports will be required every Monday, starting May 12th, until the waiver expires.

This extension will play a vital role in supporting the region's recovery efforts by providing necessary waste disposal capacity during this critical time.

**Weekly Tonnage Under the Emergency Waiver:**

| <u>January 2025</u>       | <u>February 2025</u>      |
|---------------------------|---------------------------|
| Week of 1/27: 67,647 tons | Week of 2/24: 68,568 tons |
| Week 1/20: 60,555 tons    | Week 2/17: 69,468 tons    |
| Week of 1/13: 63,235 tons | Week of 2/10: 65,162 tons |
| Week of 1/6: 67,428 tons  | Week of 2/3: 66,499 tons  |
| <u>March 2025</u>         | <u>April 2025</u>         |
| Week of 3/24: 71,053 tons | Week of 4/21: 68,157 tons |
| Week of 3/17: 72,591 tons | Week of 4/14: 71,131 tons |
| Week of 3/10: 68,554 tons | Week of 4/07: 72,196 tons |
| Week of 3/03: 66,930 tons | Week of 3/31: 71,125 tons |

**Scan for copy of El Sobrante Landfill letter:**





# STAY READY SO YOU DON'T HAVE TO GET READY: PREPARING FOR OUR NEW NORMAL



*Left - Airport Fire (2024) & Holy Fire (2018)*

It's no surprise now that there is no such thing as "fire season" in California – the Los Angeles fires in January made that abundantly clear. Temescal Valley, like many parts of Southern California, has been built into the wildland interface, increasing the risk and frequency of wildfire. Staying prepared for emergencies – fire, flood, earthquake or otherwise – empowers residents to make the necessary steps that when disaster strikes, they can act quickly and confidently in their decisions. In this spirit, our editors have decided to make this a continued feature in our newsletters moving forward.

Setting up a plan for the "what if" is for many is an overwhelming task but statistically those who plan in advance do better at recovery from disasters than those who plan nothing.. You can break this down into smaller steps:

- If we needed to go, what would I take? Can I quickly assemble my necessary items? What if I needed to guide a neighbor or a friend to retrieve items because I'm unable to get back home?
- If we needed to go, which route would we go? Where would we meet? Do we have family or friends to stay with outside of the immediate area? How would we handle sheltering-in-place if necessary?
- How would I communicate with family if cell service goes down? With the prevalence of cell phones and the option to save contacts, having an offline listing of phone number is invaluable.
- How will I get notified? Most alert systems ping off of cell phone towers or registered addresses for Reverse 911. Alert Rivco is utilized as well within the county and by registering you can be notified even if you are not at home. You can register for free online: <https://rivcoready.org/alert-rivco>
- Talk to your neighbors! Do they work out of area? Would your neighbor need assistance in evacuating? Could they assist you in an emergency if you weren't in the area?
- Assemble a kit or a grab & go bag. You can start small, a few items here and there, but ideally you should be able to be able to shelter for 72 hours with this kit for each human or pet in your household. For what to include in your kit, please see the following resources:



Rivco EMD



Cal-FI Prepare

22<sup>nd</sup> Annual



## TEMESCAL VALLEY COMMUNITY FAIRE

Hosted by the Temescal Heritage Foundation

*Free!*

**GAMES, PRIZES**  
**CRAFTS, BOUNCERS**  
**FACEPAINTER, BALLOON TWISTER**  
**CLIMBING ROCK WALL**  
**PONY RIDES, PETTING ZOO**  
**ALL-YOU-CAN-EAT WATERMELON**



*Free!*

**LIVE ENTERTAINMENT, DOG SHOW**  
**FIRE & SHERIFF VEHICLES**  
**WATERMELON EATING CONTEST**

**PLUS LOCAL BUSINESSES, COMMUNITY SERVICES AND  
FOOD TRUCKS**



### 5-10K RUN/WALK PLUS FAMILY WALK

7 a.m., SATURDAY, MAY 17, Deleo Regional Sports Park

FOR RACE, EXHIBITOR, CONTEST  
INFO & REGISTRATION FORMS VISIT:  
<https://www.wearetv.org/faire/>



**FREE!**  
**FAMILY FUN**  
**SATURDAY**  
**MAY 17th**  
10AM – 4PM  
**TOM'S FARMS**  
23900 TEMESCAL CANYON RD  
TEMESCAL VALLEY 92883

### THANK YOU TO OUR SPONSORS



Ranpac



WERNER  
CORPORATION



**Karen Spiegel**

Riverside County Supervisor 2nd District

**TOSCANA**  
COMMERCE CENTER



PROFICIENCY  
CAPITAL


TORO ENERGY OF CALIFORNIA EL SOBRANTE



EXCELLENCE IN RENEWABLE ENERGY




# YOUTH RIDE FREE



July 1, 2024 – June 30, 2025

To ride free, simply show a valid school ID, RTA youth ID card, or any state-issued ID showing the rider is 18 or under.

Visit [RiversideTransit.com](https://RiversideTransit.com) or call us at 951.565.5002 to plan your trip.



SATURDAY  
JUNE 14, 2025



THE GOONIES  
PARENTAL ADVISORY

CSA 134 PRESENTS

MOVIES IN THE PARK



Disney PIXAR  
INSIDE OUT 2

SATURDAY  
JULY 12, 2025

DELEO REGIONAL PARK 25655 SANTIAGO CANYON ROAD, TEMESCAL VALLEY 92883

ACTIVITIES START AT 7PM | MOVIE STARTS AT DUSK

## Temescal Valley Meeting Schedule

|   |  |
|---|--|
| <p><b>Elsinore Valley Municipal Water District</b><br/>4:00 PM, June 12th, Public Hearing June 26th<br/>District Headquarters: 31315 Chaney Street, Lake Elsinore</p>   | <p><b>Lake Elsinore Unified School District</b><br/>6:00 PM, Second Thursday of the month<br/>545 Chaney Street, Lake Elsinore</p>   |
| <p><b>Temescal Valley Water District</b><br/>8:30 AM, Tuesday, May 27, June 24th, July 22nd<br/>District Office: 22646 Temescal Canyon Road, Temescal Valley</p>  | <p><b>Corona-Norco Unified School District</b><br/>7:00 PM, Tuesday, June 10th<br/>Watch the meeting live:<br/><a href="https://www.youtube.com/@CNUSDBoardMeetings/featured">https://www.youtube.com/@CNUSDBoardMeetings/featured</a></p> |
| <p><b>Riverside County Board of Supervisors</b><br/>9:30 AM, Tuesday, May 20th, June 24th, July 1st<br/>Budget Meetings June 9-10<br/>Watch the meeting live: <a href="https://rivcotv.org/BOS">https://rivcotv.org/BOS</a></p> | <p><b>Temescal Valley Municipal Advisory Council</b><br/>6:30 PM, Wednesday, June 11th<br/>The Terrace Club @ Terramor<br/>6:30 PM, Wednesday, July 9th<br/>The Clubhouse @ Horsethief Canyon Ranch</p>                                    |