



Evacuating Temescal Valley



HEADED NORTH: This photo was taken by RCTC staff a few years ago and shows the northbound I-15 between Indian Truck Trail and Temescal Canyon Road. An estimated 150,000 vehicles touch Temescal Canyon Road at the I-15 weekdays.

County’s EMD director says ‘no flexibility with one plan’

Evacuation plans don’t come in a “one size fits all,” according to **Bruce Barton**, director of the county’s **Emergency Management Department**, who spoke at the May **Municipal Advisory Council** meeting.

A group of **Trilogy** residents, opposing a proposed 181,495 square-foot Amazon center, handed out literature at the April **Town Hall** demanding the county not approve construction permits for new development until there is an emergency response and evacuation plan for Temescal Valley.

Barton told the audience the county has an **Emergency Operations Plan** approved by the Board of Supervisors in 2019. The 106-page EOP and its 21 related Emergency Support Function sections comprise 534 pages outlining who does what and when and for whom during emergencies, whether a single incident, a disaster, or a catastrophe.

View the Emergency Operations Plan [HERE](#)

One of the ESF sections is the Evacuation and Re-Entry Plan. It looks at the general concepts utilized in successful evacuations and reviews the primary roles and responsibilities for county and other agencies involved in the process.

WHAT’S INSIDE

- **State plan for transportation is not realistic**
- **Local water districts announce conservation plans**
- **All fireworks are illegal in unincorporated areas**
- **Homes could be swapped for warehouses in HCR**
- **Assisted living center hearing on July 6 agenda**
- **Hearing for 15 Sycamore Creek homes also July 6**

According to Barton, once the decision to evacuate is made based on the degree of threat to public safety, the evacuation routes are determined at the scene and are dependent on several factors including type of emergency, time of day, and the size of the area to be evacuated. “A pre-determined set plan doesn’t have flexibility needed for every situation,” Barton said.

The largest evacuation effort in the history of the county involved areas of **Temescal Valley** and **Lake Elsinore** and occurred on Feb. 14, 2019. Heavy rainstorms caused flooding and debris flows in the **Holy fire** burn scar and forced the evacuation of 10,414 homes and involved 30,000 to 35,000 vehicles. “That evacuation was considered effective and successful,” Barton said.

The county no longer uses the color-coded system of evacuations based on “Get ready, get set. GO!” In the new system an evacuation warning signals potential threat to life and/or property, and those who require additional time or who have pets and livestock should evacuate now. An evacuation order means immediate threat to life and is a lawful order to leave now and lawfully closes the area to public access.

Barton noted that during the August 2018 Holy fire, the majority of Temescal Valley residents became familiar with the evacuation process and the map the county created which placed neighborhoods into easily identified evacuation areas. The map allows the user to input an address to see if a specific area is under evacuation.

See Temescal Valley evacuation map [HERE](#)

The decision to evacuate is made by the incident commander at the scene of the emergency.

CONTINUED NEXT PAGE

A worse commute?

From **THE POINT June 6 Newsletter**
Riverside County Transportation Commission

A report recently released by the **California Strategic Growth Council** takes stock of California's transportation system and its history of project planning, funding, and delivery to explore how the State can make changes to reduce carbon emissions to achieve its climate action goals.

The California Transportation Assessment Report makes sweeping recommendations to align all pending and future transportation projects with the State's climate action policies – including projects approved at the local level and funded with voter-approved sales tax revenue. This report builds on policy changes spearheaded by Governor Gavin Newsom to reduce use of single occupancy vehicles by shifting funding from expanding roads and highways to transit projects.

What does this mean for Riverside County residents? It means traffic will continue to choke the state highway system. And the State hopes that this congestion will push residents to switch from driving to walking, biking, and traveling by bus and train.

The problem is, the State has not identified how to fund billions of dollars needed to develop a robust, easy-to-access and on-time multimodal transit system that would enable Riverside County residents in transitioning from driving their own cars.

Instead, decision makers in Sacramento are considering policies that will control how local funds like Riverside County's voter-approved sales tax measure, **Measure A**, are to be spent on transportation projects. Funding could be diverted from voter-approved improvements to projects that align with climate goals but barely move the dial toward reliable transit alternatives.

In all likelihood, inland residents will be forced to either spend exponentially more of their time in traffic or give up their jobs for something closer that still meets their needs.

Contrary to the State's blunt approach, **RCTC** believes that state efforts to reduce the impacts of climate change can complement our air quality, health, and economic well-being, if implemented the right way. Here is how RCTC is responding to the State:

- RCTC provided [comments](#) last year on the **California Transportation Agency's** (CalSTA) **Climate Action Plan for Transportation Infrastructure** (CAPTI), the State's blueprint for aligning transportation funding programs with state climate action goals;
- RCTC recently submitted [comments](#) to the **Strategic Growth Council's California Transportation Assessment Report**;
- RCTC [opposed AB 2237](#) by Assemblymember **Laura Friedman** (Glendale), which would allow the state to reallocate funding previously approved for local projects; and
- RCTC [opposed AB 2438](#), also by Assemblymember **Friedman**, which would require existing state transportation funding programs to align with state climate goals.

Here's the bottom line. Without dramatic funding increases from the State and flexibility that respects the diversity of our region, we may never transition to multimodal transit systems that everyone can rely on. And without Riverside County's success, the State may never get out of first gear.

For more information and to show your support for keeping transportation solutions local, visit: rctc.org/support

EVACUATION PLAN . . .

CONTINUED FROM PREVIOUS PAGE

The goal is to evacuate the smallest area possible to displace the fewest number of residents while utilizing the safest route. Once that determination is made, the message is sent through agency channels and to the public.

"Specific evacuation route instructions may be given to residents that direct them away from areas of danger. It is critically important that all residents register for [AlertRivCo](#)," Barton said, "so that they can receive real time evacuation warnings and orders." He explained while land lines are automatically registered, including numbers that are unlisted, cell phones are not. Texts and emails also can be requested.

Register your cell phone [HERE](#)

The third type of evacuation message is to Shelter in Place which would be the order following an emergency such as a catastrophic earthquake where movement would make things worse and evacuation routes would be typically blocked due to severe damage over a widespread area. A Shelter in Place order would require residents to have on hand emergency kits and supplies, including food and water to cover at least seven days.

Check out Disaster Preparedness [HERE](#)

Barton said he was aware of Temescal Valley having only two north/south roadways and no east/west routes, raising concerns over a mass evacuation plan for the area. "There are 150,000 vehicles touching Temescal Canyon Road and the I-15 every day, and the number will continue to rise with residential density in the corridor."

Barton noted those 150,000 daily cars impact the considerations associated with evacuations, dependent on the time of day. He said if a major evacuation was necessary for the area, **CHP** and **Caltrans** could **shut down the I-15 between state routes 91 and 74** to facilitate the movement of equipment and personnel, and the evacuation of all Temescal Valley residents.

"Twenty-two miles of the I-15 in San Diego County were shut down during the 2003 **Cedar fire** and the I-10 in Beaumont has been closed in past evacuations with coordination by CHP, Caltrans and the county's **Transportation and Land Management Agency**," Barton said. "It's entirely possible to do that level of coordination in Temescal Valley if needed."

He said there is work being done with those agencies to update an I-15 corridor hazard plan.

In response to a question about residents physically unable to evacuate, Barton said evacuations for older adults and people with special needs take additional time. "Those residents who receive care through the county's **Office of Aging** and **Department of Social Services** are enrolled in programs that allow emergency services to see who may require more time, assistance, and resources."

He said **Ralph Mesa** continues to be Temescal Valley's emergency services coordinator and urged residents to check out the department's volunteer opportunities. [Be an EMD volunteer](#)



**"DOING THE GREATEST GOOD,
FOR THE GREATEST NUMBER"**

[LEARN MORE](#)

Local deputy gives tips to make our homes more secure

By **CPL. DENNIS SANTIAGO**
Lake Elsinore Sheriff's Station

In response to requests from the Temescal Valley Community for information regarding suggestions for home security and based on residents' request for security tips during the May TMAC, I have gathered information from various sources to use as guidelines for the good folks of Temescal Valley. While it is impossible to eliminate 100 percent of all crime, here are some guidelines to assist you.

FIVE WAYS TO REDUCE THE ODDS OF STOLEN PACKAGES

Tips to reduce your chance of having your packages stolen: Give explicit delivery instructions to hide packages out-of-sight.

1. Have Amazon packages delivered straight to your home/garage with Amazon Key.
2. Install a video doorbell camera.
3. Have your package shipped to a relative, trusted neighbor, P.O. box, or your local Amazon Locker.
4. Invest in a parcel locker or anti-theft package box for your entryway.
5. Contribute to helping keep your neighborhood safe by reporting a package theft if, and when, it occurs.

AT HOME AND VACATION SAFETY TIPS

While not every instance is 100 percent preventable, being aware that situations can happen and how to prepare is often the simple key. Here are some key highlights for safety that police advise – for your home, travel and self:

AT HOME

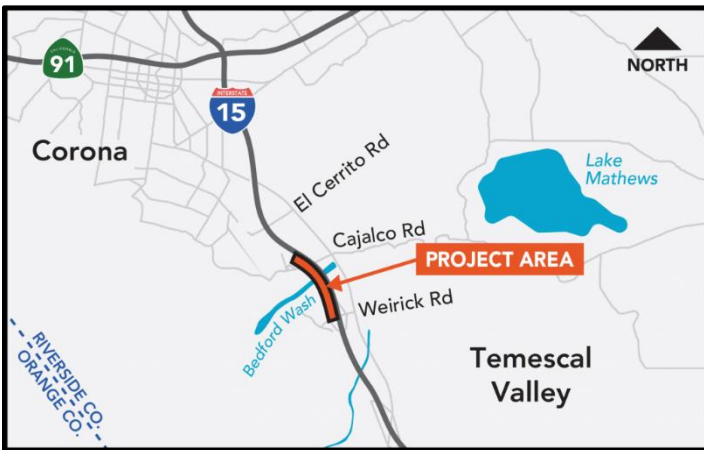
- Make sure all doors and windows have secondary locks (window pins, deadbolts, dowels, etc.) and use them!
- Don't hide spare keys in mailboxes or planters, or under doormats.
- Ensure that dark areas and entrances have outdoor lights that are turned on after dark or are activated by sensors.
- Keep trees and shrubbery trimmed so they do not conceal doors and windows. Remember, overgrown foliage can provide a hiding place for criminals.
- Place gifts where they can't be seen from the outside.
- Consider safe deposit boxes for coin and stamp collections, seldom-worn jewelry, stock bonds, etc.
- Be sure to mail cards, checks or gift certificates from Post Office.
- Lock your vehicle and remove all the valuables. Yes, even in your driveway.

STRANGERS AT YOUR DOOR

- Use caution anytime there is a stranger at your door.
- Be suspicious of unexpected sales calls or deliveries. Ask for ID.
- Be aware of scams that criminals commit to take advantage of people's generosity.
- Investigate charities before making donations. Ask how the funds will be used.

LEAVING FOR VACATION

- Ask a trusted friend, neighbor or Neighborhood Watch member to watch your home.
- Use timers for lights and radios while you're away.
- Remember to make arrangements for mail and newspapers.



WORK BEGINS ON NEW LANE

Work started last month on **RCTC's I-15 Interim Corridor Operations Project**, which will add a non-tolled lane from the Cajalco Road on-ramp in Corona to the Weirick Road off-ramp in Temescal Valley, next to the outer shoulder.

RCTC approved a construction contract this spring. The new lane is anticipated to open in three to four months, with financial incentives for the contractor to complete work ahead of schedule.

Although the lane addition is less than one mile, it is expected to help relieve traffic congestion where the 15 Express Lanes end at Cajalco Road. It also will: Add space for emergency vehicles along the inner shoulder, add or upgrade guardrails, improve drainage systems, and install new overhead signs.

Drivers are seeing k-rail, reduced lane and shoulder widths, construction signs, and equipment. Watch for nighttime lane and ramp closures and follow the 55 mile per hour speed limit in the project area.

Sign up for alerts or text **15iCOP** to **844-771-0995** for text message alerts. Also follow RCTC on social media at **@theRCTC** for project updates, too.

TEMESCAL VALLEY CRIME STATS

Lt. Sarah Mack, with the **Lake Elsinore Sheriff's Station**, has provided information on Part I crimes that occurred here during **May** and **April**.

The station received **381 calls** for service from Temescal Valley during May – **31 more** than received in April.

Twenty-four calls in May and **31** calls in April were for Part I crimes. No homicides, arsons, robberies or sex crimes were reported for the two-month period. Here's the breakdown:

Assault – 3 in May and **1 in April**.

Burglary – 5 and **4**.

Grand/Petty Theft – 12 and **15**.

Theft from Vehicle – 1 and **6**.

Vehicle Theft – 3 and **5**.

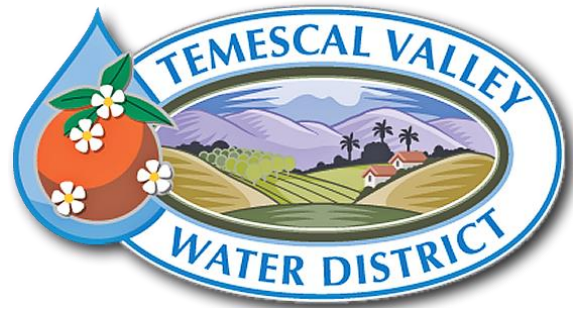
There was one arrest in May – a felony for corporal injury to a spouse.

April saw two arrests – no felonies and two misdemeanors including one warrant and one possession of drug paraphernalia.

There were **nine vandalism**s reported for May and **five** for April. **Disturbing the peace** calls numbered **37** for May and **32** for April.



DROUGHT PLANS FOR TEMESCAL VALLEY'S WATER DISTRICTS



In response to the ongoing drought in California, the **Governor's Executive Order** to reduce water consumption, and the **State Water Resources Control Board's** recently passed regulations and mandates, **Elsinore Valley Municipal Water District** (EVMWD) is enacting new water guidelines to meet the State's water reductions. Through public participation in conservation efforts, EVMWD has set a goal to reduce local water consumption by 10 to 20 percent.

"Our customers have always responded to the call to conserve water and now we are asking everyone to step up their efforts through the summer months," said **Greg Thomas**, EVMWD general manager. "There are simple steps that we can all take to ensure our limited water resources are used wisely."

EVMWD water reduction guidelines are aligned with those of the state of California and include the following:

- Limit landscape irrigation to no more than 3 times per week and only between 6 p.m. and 6 a.m.
- Adjust irrigation systems to avoid overspray and overwatering.
- Water by hand using a hose with an automatic shutoff nozzle or drip irrigation system if watering during the day.
- Use a pool cover to reduce evaporation. Do not fill uncovered swimming pools.
- Operation of fountains and similar structures must be equipped with a recirculating system.
- Fix leaky faucets, toilets, pipes and irrigation systems.
- Do not wash driveways or sidewalks with water.
- Wash your vehicle only with a hose and shutoff nozzle.

To aid in customer awareness of the current water saving guidelines, EVMWD has shared drought updates at evmwd.com/conservation. In addition, EVMWD customers can learn about water-saving rebates and incentives for both home and business.

Since 2013, the population in EVMWD's service area has increased by 8 percent; however, overall water consumption has dropped by 6 percent – demonstrating the effectiveness of customers' water efficiency efforts.

"We thank our customers for always being water conscious and are confident they will rise to the occasion during this ongoing drought," added Thomas.

During this time of increased water conservation, EVMWD wants to help customers avoid excessive use costs. All customers are urged to stay within their water budget and avoid going over Tier 2 water use. More information about tiered water usage and water rates can be found at evmwd.com/rates. For additional information on California drought action, visit drought.ca.gov.

Temescal Valley Water District General Manager **Jeff Pape** said the district will go to Stage II Water Alert restrictions by July which call for a 25 percent reduction in potable water usage. These water-saving measures are like those imposed with the drought in 2015.

Pape, speaking at the June meeting of the **Municipal Advisory Council**, said he doesn't view the guidelines as restrictions but, instead, as conservation measures the public should already be undertaking. "TVWD doesn't want to assume our least favorite role as Water Police – there's no fun in that," Pape said, getting a chuckle from the audience.

He praised the **Western Municipal Water District** for the job it's doing. WMWD is the local district's wholesale water supplier. He said while the majority of the district's water comes from the **Metropolitan Water District** through WMWD, "Met" or "State Water Project" water isn't the only source used by WMWD. Recent investments by the wholesaler have created local supply and storage at **Diamond Valley Lake**, providing another source outside of MWD.

Pape explained that the governor's hard-hitting restrictions issued in May only applied to districts that 100 percent rely on MWD for their water.

He did say, though, one of the governor's tough restrictions applies to all districts in the state. Potable water can no longer be used to irrigate non-essential turf on commercial and industrial properties. That doesn't include home lawns, parks or school grounds and sports fields, but it does include decorative turf at businesses, in parkways and in common areas of housing subdivisions.

Pape said he sees Temescal Valley in pretty good shape for this year, but another season of little to no rain could make for more strict regulations in the future. Pape said Stage III restrictions prohibit agriculture use of potable water which would have severe consequences on avocado and orange groves at **Trilogy** and **Montecito Ranch**.

Here are the Stage II Water Alert guidelines:

1. All provisions of Stage I shall apply or as modified by the current Stage;
2. The following residential irrigation schedule is in effect. Irrigation is limited to 10 minutes per station per day between the hours of 9 p.m. and 6 a.m. This provision does not apply to landscape irrigation systems using water efficient devices including drip/micro-irrigation systems or the use of hand-held hose equipped with a shut-off nozzle or bucket to water landscaped areas.

CONTINUED NEXT PAGE





WATER BRIEFING: During the May meeting, Temescal Valley Water District General Manager Jeff Pape, left, answers questions from his Board about the drought situation.

Generally, no changes in 2022 fireworks enforcement

Citing the effectiveness of a month-long anti-fireworks campaign last year, **Capt. Andrew Elia** of the **Lake Elsinore Sheriff's Station** said the county **Board of Supervisors** has approved an almost identical plan for enforcement as the **Fourth of July** holiday approaches.

Elia, speaking at June's **Temescal Valley Municipal Advisory Council** meeting, said the sheriff's, fire and code enforcement departments will again work side-by-side the weekend of Friday, July 1 through Monday, July 4 to enforce county laws regarding the illegal use of fireworks.

County ordinance makes possession and ignition of all fireworks, including the "safe and sane" variety, illegal in the county's unincorporated areas as a criminal misdemeanor. The ordinance was amended last year to add a new section making possession and ignition of fireworks an administrative civil violation as well.

As a criminal misdemeanor, if convicted, a person could be punished with a \$1,000 fine and/or a one-year imprisonment in the county jail – which in most cases would be unlikely.

But a citizen cited for an administrative civil violation **must pay \$1,000** for the first offense, \$2,000 for a second offense happening within 36 months of the first offense, and \$5,000 for each subsequent offense within 36 months. Plus – not only the person setting off the fireworks will be cited, but also the owner of the property upon which the fireworks were ignited.

Since only code enforcement officers can issue and process administrative citations, Elia said this year code enforcement personnel will be riding patrol with sheriff's deputies.

This year's anti-fireworks campaign will carry the same theme as last year's, "**If You Light It, We'll Write It,**" and the same telephone number to report illegal fireworks, **1-800-950-2444**. Elia said a link to file complaints online will be released to the public five days prior to the holiday.

Be prepared to offer as much information as possible when reporting aerial displays. An exact street address is preferred and, if possible, the name of the homeowner and a physical description of the person or people launching the fireworks.

When asked how Temescal Valley will be covered this year, compared to last year when the Sheriff's Department focus appeared to be **Lakeland Village**, Elia said staffing will be increased this year.

TVMD DROUGHT PLAN . . . CONTINUED FROM PREVIOUS PAGE

- *Odd numbered houses may irrigate on Sunday, Tuesday, and Thursday.*
 - *Even numbered houses may irrigate on Monday, Wednesday, and Saturday.*
- 3.** Non-residential irrigation such as parks, HOA irrigation meters, recreation fields, and school grounds irrigation are limited to 10 minutes per station per day between the hours of 9 p.m. and 6 a.m. and may water on Monday, Wednesday, and Friday. With permission by TVWD this provision does not apply to landscape irrigation systems using water efficient devices, including but not limited to: weather-based controllers and drip/micro-irrigation systems upon the commitment to cut use by 25%;
 - 4.** Agricultural use of potable water shall be via micro sprinklers, stream rotors only between midnight and 9 a.m. of the following day on Mondays, Wednesdays, and Fridays;
 - 5.** Discontinue landscape irrigation during measurable rainfall for a period of 48 hours;
 - 6.** There shall be no washing down of driveways, parking lots, or other paved surfaces;
 - 7.** Private car, RV, boat, trailer or truck washing shall be done using a bucket and hoses with shutoff nozzle;
 - 8.** Restaurants will be asked not to serve water to customers unless specifically requested and then only in disposable cups;
 - 9.** Swimming pools shall utilize recirculating system for filtration;
 - 10.** District will not issue new potable construction meters;
 - 11.** No potable water will be used for artificial lakes, ponds or streams until the water alert has been declared over;
 - 12.** District will not issue new temporary meters;
 - 13.** Potable construction water shall not be used for earthwork, general construction purposes or irrigation. Testing of potable lines accepted;
 - 14.** No potable water irrigation of turf on public street medians;
 - 15.** No new non-residential irrigation with potable water will be allowed

NON-EMERGENCY HOTLINE
1 (800) 950-2444

TEMESCAL VALLEY DEVELOPMENT UPDATE

Amazon will not locate here; is cutting back due to unionization

Jerry Sincich, chairman of the **We Are Temescal Valley Development Committee**, announced at the June meeting **Amazon** will not be locating in Temescal Valley.

The vast internet-based retailer has scrapped its plans to place a last-mile distribution center at the southeast corner of **Dawson Canyon** and **Temescal Canyon** roads on 46 acres owned by **Proficiency Capital**. The reason given was the threat of unionization by Amazon workers and the financial issues and possible litigation it could create.

Prior to Amazon, Proficiency's plan for the property was warehouse buildings ranging in size from 36,500 to 227,400 square feet and a small retail component -- gas station/car wash, convenience store and two fast-food restaurants.

Assisted living center hearing on July 6 Planning Commission agenda

Property owner **Ben Day** is seeking a Conditional Use Permit to build an assisted living center on the southwest corner of **Trilogy Parkway** and **Temescal Canyon Road**.

Learn more [HERE](#)

The project involves the development of a senior community with 109 assisted living units, 32 memory care living units (for a total of 141 assisted living units), and 75 independent living units on approximately 10 acres.

A **Planning Commission** public hearing will be held **Wednesday, July 6**. In the meantime, public comments are being accepted through **Friday, June 17** for the project's Initial Study and Mitigated Negative Declaration (sort of a mini-environmental impact report.) Comments can be emailed to county Planner **Russell Brady**, rbrady@rivco.org.

The project's Initial Study shows that any significant impacts the development might have on the environment can be minimized with the implementation of mitigation measures.

Read the **Initial Study** [HERE](#)

Read the **Mitigated Negative Declaration** [HERE](#)

DECISION ON LEAPS EXPECTED SOON

With the 60-day comment period now over, it is expected the **Federal Energy Regulatory Commission** will soon decide on whether to issue a preliminary permit to the **Nevada Hydro Company Inc.** to proceed with its controversial **Lake Elsinore Advanced Pump Storage** project.

When FERC dismissed the license application and denied a rehearing request, it appeared LEAPS was dead. But Nevada Hydro then filed an application for a preliminary permit for LEAPS under a new docket number -- **P-15261-000**.

FERC accepted the application in April and set the period for public comments and motions to intervene. Having intervention status gives citizens, organizations, and public agencies the ability to legally challenge FERC's final decision on the project. By the June 6 deadline, FERC received 11 intervention motions and about 70 comments -- all opposing the project.



RENAISSANCE RANCH COMMERCE CENTER: Illustration shows how Horsethief Canyon Ranch homes would wrap around the industrial buildings on two sides.

Developer wants to replace 355 homes with industrial buildings next to Horsethief

A Draft Environmental Impact Report for the proposed 157-acre **Renaissance Ranch Commerce Center** adjacent to **Horsethief Canyon Ranch** is ready for public review and comment.

There's a **July 25 deadline** for comments and they can be emailed to county Planner **Russell Brady**, rbrady@rivco.org

Plans for the project were presented at a **Temescal Valley Municipal Advisory Council** meeting in March 2021. Owned by **Richland Communities**, the center would replace the 355-home development approved for that acreage in 2005. Eighteen acres would be devoted to a business park and 97.2 acres to light industrial and the remaining 38.6 acres would be undeveloped and set aside as open space and conservation habitat. The concept would be similar to the **Wildrose Business Park** where **Hunnys Café** is located.

Next step in the process will be a public hearing at a county **Planning Commission** meeting and, if commissioners recommend approval, the final step will be a hearing at a **Board of Supervisors'** meeting. The public will be able to make comments prior to both hearings, which are yet to be scheduled.

View the project and related documents [HERE](#)

View the **Draft Environmental Impact Report** [HERE](#)

Read about the project in the [April 2021 newsletter](#)

Prices listed; builder now accepting appointments to see Serrano homes

Builder **Taylor Morrison** has listed the prices of the 80 single-family homes being constructed on Temescal Canyon Road near Campbell Ranch Road.

There are four floor plans in the **Serrano** community ranging in size from **1,732 square feet** to **2,238 square feet** and in price from **\$593,990** to **\$661,990**.

Here's how many school-age students (based on a state formula) these homes will produce and where they will attend school: 30 students for **Todd Elementary School**, 10 students for **El Cerrito Middle School** and 20 students for **Santiago High School**.

Taylor Morrison is now accepting appointments to view the homes. **Make an appointment** [HERE](#)

GOCO rethinks plans for sizable expansion of Glen Ivy Hot springs

GOCO Hospitality is scaling back its plans for resort-expansion at Glen Ivy Hot Springs.

Planning consultant **Joel Morse**, speaking at the June **Municipal Advisory Council** meeting, said new constraints on the property, including the need for water control basins, has caused GOCO to rethink its plans.

“There will probably be a 70-room hotel and two new treatment rooms,” Morse said, “but we’re still in the early planning stages and don’t yet have an exact location for the hotel. We hope to have more specific information to present to the community in another six months or so.”

GOCO, a few years ago, had submitted a Specific Plan to the county for the expansion. The current spa covers about 20 acres and GOCO was seeking to develop the remaining 62.5 acres. The plan called for the creation of 17 planning areas on a total of 82.5 acres allowing for a mixture of 255 short-term and long-term residential units, a 165-room boutique hotel, spas, pools, fitness studios, meeting rooms and new commercial uses including restaurants. Open space for recreation would total 32.2 acres. About 14.5 acres would be set aside for permanent conservation.

Morse said the issue of secondary access must still be resolved. When the project was introduced to the community in June 2018, **Trilogy** residents balked at an easement GOCO would need for a gated road connection to Trilogy’s **Gleneagles Drive** cul-de-sac that would serve as a secondary exit from the resort in case of an emergency. Morse, at a later presentation, told the residents he had reviewed the situation and learned that **Shea Homes** had granted the easement to Glen Ivy Hot Springs prior to Trilogy being built.

Accompanying Morse at the MAC meeting was new General Manager **Hervé Blondel**, who most recently was GM at **Rancho La Puerta**, a fitness resort and spa in Mexico.



TEMESCAL VALLEY LANDMARK: Glen Ivy Hot Springs welcomes 200,000 visitors each year.

The 162-year-old spa and adjacent property was purchased in January 2016 by GOCO, an international wellness hospitality development and management company headquartered in Bangkok. Glen Ivy attracts over 200,000 visitors annually, according to GOCO.

July 6 hearing scheduled for final phase of 110 Sycamore Creek homes

The final phase in the 110-home **The Highlands at Sycamore Creek** development is on the agenda for a public hearing at the county’s **Wednesday, July 6, Planning Commission** meeting.

Approval is being sought to subdivide about 34 acres into 15 single-family lots and three non-residential lots. Proposed lot sizes are an average of 13,305 square feet, with a minimum size of 8,109 square feet. About 3.48 acres are to be designated for three open space lots. 26.8 acres will remain undisturbed open space.

The location in Sycamore Creek is south of **Santiago Canyon Road** and adjacent to the **Lennar homes**.

The first phase of 16 homes was approved in 2019 and the second phase with 79 homes was approved in 2020. When built, the community will have its own HOA. Also planned is a passive park with picnic tables, open space area with trails and a water quality basin.

Comments on this phase of the development and the Mitigated Negative Declaration could be sent to county Planner **Brett Dawson** at bdawson@rivco.org, through **Monday, July 4**. **View the documents [HERE](#)**



CAPISTRANO REVISITED: While swallows might favor the Orange County seaside city, in recent years they’ve been spotted locally. Probably because real estate here is less expensive! These are nesting at the Temescal Valley Water District office.

BROUGHT TO YOU BY RIVERSIDE COUNTY CSA PARKS & RECREATION

MOVIES *In The* Park

Deleo Park

25655 SANTIAGO CANYON RD, TEMESCAL VALLEY, CA



ENCANTO JUNE 25, 2022

SING 2 JULY 23, 2022

ACTIVITIES START AT 7PM ★ MOVIE STARTS AT DUSK

GRAB YOUR BLANKETS AND LAWN CHAIRS AND JOIN US FOR A NIGHT OF
FILM AND FAMILY FUN UNDER THE STARS!

EMAIL RKROSS@RIVCO.ORG FOR MORE INFORMATION

**SUMMER
2022**

\$1.00

MOVIE SERIES

CINEMA CITY THEATRES & DOS LAGOS LUXURY THEATRES

JUN 21 & 22	SCOOB!
JUN 28 & 29	CLIFFORD THE BIG RED DOG
JUL 5 & 6	HOTEL TRANSYLVANIA 2
JUL 12 & 13	THE LEGO MOVIE 2
JUL 19 & 20	KUNG FU PANDA
JUL 26 & 27	SHREK 2

MOVIES BEGIN 10AM. DOORS OPEN 9:30AM.

SEATING IS LIMITED. ARRIVE WITH ENOUGH TIME TO PURCHASE TICKETS.
OR, RESERVE YOUR SEATS VIA StarlightCinemas.com/summer-2022

CINEMA CITY THEATRES | 5635 East La Palma Ave | Anaheim, CA | 714-970-6700
DOS LAGOS LUXURY THEATRES | 2710 Lakeshore Drive | Corona, CA | 877-795-4410

Current feature films not included in \$1.00 admission. Schedule and movies subject to change.

**\$4 SNACK PACKS
AVAILABLE!**





SPLASH INTO SUMMER

SATURDAY, JUNE 25 • 9 A.M. - 12 P.M.
31315 CHANEY STREET • LAKE ELSINORE





SPECIAL NEEDS REUNIFICATION PROGRAM

RIVERSIDE COUNTY SHERIFF'S DEPARTMENT

The Sheriff's Department has designed a program to help us locate missing members of our community with special needs.

With our program, deputies and dispatchers will have access to pre-registered information, photographs, possible destinations and even calming strategies at the time of the call.

**THE GOAL OF THIS PROGRAM IS TO EXPEDITE
REUNIFICATION AS SOON AS POSSIBLE.**

WAYS TO ENROLL

Call any Sheriff's Station for an appointment and submit your entry in person.

Visit www.riversidesheriff.org for a station in your area.



or simply

SCAN HERE

to get started online



KNOW A BUSINESS OWNER? PLEASE SHARE THIS INFORMATION

COUNTY OF RIVERSIDE

MICROBUSINESS COVID-19 RELIEF GRANT PROGRAM



ELIGIBLE USE OF FUNDS

- ✓ Payroll/Employee Retention
- ✓ Working Capital
- ✓ Purchase of Personal Protective Equipment
- ✓ Rent or Mortgage Payments
- ✓ Paying Vendor Invoices



\$2,500 GRANTS

APPLY AT
WWW.RIVCOBIZHELP.ORG

Grants are awarded on a first-come, first-served basis. Applications will be accepted through June 30, 2022 at 5pm or until funds are exhausted.

ELIGIBLE MICROBUSINESSES

- ✓ Less Than 5 Full-Time Employees
- ✓ In Operation Since 12/31/2019
- ✓ Business Must be the Source of Primary Income in 2019
- ✓ Less Than \$50,000 in Revenues in 2019
- ✓ Haven't Previously Received a Small Business Relief Grant from the State of California

Applicants will be notified within 14 business days from point of application submittal as to approval status. Awardees will receive funding once the County of Riverside receives funding from the California Office of the Small Business Advocate which is expected no later than early April 2022.

EMAIL RIVERSIDE COUNTY OFFICE OF ECONOMIC DEVELOPMENT AT BIZINFO@RIVCO.ORG

VISIT WWW.RIVCOBIZHELP.ORG FOR A COMPLETE LISTING OF REQUIREMENTS

FUNDED IN PART THROUGH A GRANT FROM THE CALIFORNIA OFFICE
OF THE SMALL BUSINESS ADVOCATE.





Fentanyl: What Parents Need to Know

What is fentanyl?

Fentanyl is a synthetic opioid that is similar to morphine but is 50 to 100 times more potent. Although it can be prescribed by a doctor to treat patients with severe pain, it is also made and used illegally.

Illegal Fentanyl is sold as a powder, dropped onto blotter paper, put in eye droppers and nasal sprays, or made into pills that look like other prescription opioids. Occasionally, the powder is used in vaping devices typically used for nicotine or marijuana.

Some drug dealers are mixing fentanyl with other drugs. This is because it takes very little fentanyl to produce a high, making it cheaper to produce and distribute. This is risky because people taking drugs or vaping don't realize they might contain fentanyl, making overdose more likely.

If you think someone is having an overdose, call 911 immediately and wait with the person until help arrives. If you think your child is using fentanyl or other opioids, please contact your family physician or your school site counselor.

Fast Facts:

- Opioids affect your brain – they affect areas of the brain that control pain and emotion, making it hard to feel pleasure from anything besides the drug.
- Opioids affect your body – they slow down the actions of the body, such as breathing and heartbeat.
- Opioids can kill you – Even a single dose of an opioid can cause your breathing to slow or stop; taking opioids with alcohol or sedatives increases this risk.
- Opioids are highly addictive. – People who regularly use opioids often develop tolerance, which means that they need higher and/or more frequent doses of the drug to get the desired effects.
- Opioid addiction is treatable – Please contact your family physician or your school site counselor for help.

How to recognize a fentanyl overdose?

- Cannot be woken up or not moving
- Breathing slow or absent
- Discoloration of lips and nails
- Choking or coughing, gurgling sounds
- Cold or clammy skin
- Dizziness or disorientation
- Pupils extremely small

To learn more or find resources, visit www.cnusd.k12.ca.us/fakeandfatal



<https://www.cnusd.k12.ca.us/fakeandfatal>

COVID-19 Vaccine



WHERE TO GET VACCINATED FOR COVID

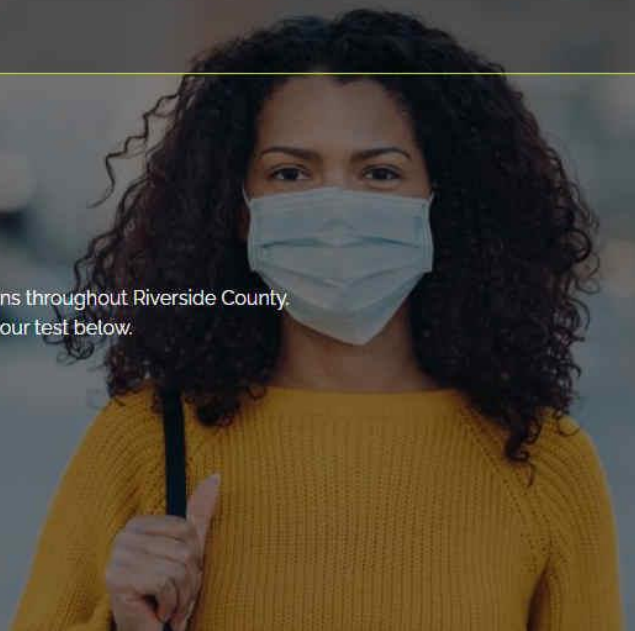
<https://www.rivcoph.org/COVID-19-Vaccine>

Check here regularly for information on all county-sponsored vaccination clinics and a list of community partners offering the vaccine



Covid-19 Testing

Covid-19 testing is now available at multiple locations throughout Riverside County. Find the testing facility closest to you to schedule your test below.



WHERE TO GET TESTED FOR COVID

<https://gettested.ruhealth.org/>

RIVERSIDE COUNTY CORONAVIRUS WEB PAGE

This page has all the latest information – data, numbers, statistics, resources, news releases, videos and more, and is updated daily:

<https://www.rivcoph.org/coronavirus>

[RIVERSIDE COUNTY PUBLIC HEALTH DEPARTMENT FACEBOOK PAGE](#)