



## HOLY FIRE GIVES RISE TO HOLY FLOWS



**FLOW FURY:** The flow down Horsethief Creek went under De Palma Road and the 1-15 Freeway and crossed Temescal Canyon Road depositing tons and tons of mud and debris. Photo taken from a video recorded by Horsethief Canyon Ranch resident **WILL WILKENS**

At least \$4 million in cleanup; debris removal estimated at 10,000 truckloads

By **BROOKE FEDERICO**  
Senior Public Information Specialist  
County of Riverside Emergency Management Department

The **Board of Supervisors** issued a proclamation of local emergency during its Dec. 11 meeting that could help make the county eligible for potential federal and state assistance.

The current estimated cost for debris removal is **\$4 million**, but this figure is preliminary as more damage estimates continue to be reported.

The areas most impacted during last week's storm were the **Glen Eden** evacuation zone in **Temescal Valley** and the **Laguna A** and **Amorose** zones in **Lake Elsinore**. These areas experienced significant debris flows, road closures, flooding and disruption of utility services.

To date, the estimated amount of mud and debris that must be removed from local communities, roads and flood control facilities is about **100,000 cubic yards** or **10,000 truckloads**.



**AFTERMATH:** Pile after pile of debris were noted during a walk-around the day after the Dec. 6 storm. This pile contained several large tree trunks. Photo by **ROB MUCHA**, a resident of The Retreat.

These numbers reflect the substantial amount of work already performed or underway by the county's **Flood Control District** and the **Transportation & Land Management Agency**. Clean-up activities include clearing and repairing public roads, as well



# DEBRIS FLOWS ...

## FROM PREVIOUS PAGE

as removing debris from flood control facilities, such as dams and basins, to restore storage capacity before the next storm.

It's important to note that last week's storm was small. Larger, more intense storms will cause even more problems. It is critical that residents continue to prepare their families and homes for potential debris flows and to always heed evacuation warnings and orders. We typically see three or four storms each year, but it's possible we may have more storms this year.

Community members must look at their home and property to find out if they are at risk of debris flows and take the safety steps to prepare listed here:

[www.RivCoReady.org/StormReady](http://www.RivCoReady.org/StormReady)

Residents living in impacted areas must clear all drainages filled with mud and consider installing sandbags or structures to protect their home from future events. Here's helpful information:

[Homeowner's Guide for Flood Prevention and Response](#)

The work by the Flood Control District to prepare for this winter has kept water, mud and debris from going over dam spillways and impacting downstream communities. However, larger storms or back-to-back storms could produce enough runoff and mud to cause muddy water to overflow the spillways.

While this a normal part of debris dam operations, it does not occur often and could increase water flows to properties with drainage easements (and their neighbors) downstream of **Leach Dam** in Lake Elsinore.

All homeowners with drainage easements must ensure that the easements are free of mud, fencing and debris that would accommodate these flows and ensure that they do not cause localized flooding for themselves or their neighbors.



**CLEANUP:** Since the day after the storm and throughout this week, Glen Eden Sun Club residents and members have worked from sunup to sundown removing the debris and mud that were deposited in the community during the debris flow. The private club had built a catch basin capable of containing 10,000 cubic yards of debris, but it quickly reached capacity and overflowed.



## ANIMAL RESCUE AT GLEN EDEN

Glen Eden Sun Club was the hardest hit area in Temescal Valley with Indian Creek running the length of the community. Even though under "Must Go" orders, some residents did not evacuate. Working together, they struggled to pull a pony, donkey, goat, pig and a sheep from the rushing debris flow as it raged within feet of their homes. Another pony perished, and several llamas are missing. The animals were swept from a ranch upstream of the nudist community.





# Here's what next for SCE's Alberhill substation project

In its quest to prove to the **California Public Utilities Commission (CPUC)**, the need for another substation in the area, **Southern California Edison** last month asked for public comments suggesting alternatives to the **Alberhill substation** it plans to build in Temescal Valley. A Nov. 30 deadline was set for receipt of comments.

The **We Are Temescal Valley Development Committee** has taken a stand against the 34-acre Alberhill substation and its two 500-kV transmission lines and towers being located here. The committee urged residents to suggest an alternative location in the vicinity of **Walker Canyon Road** and **Hill Top Drive**, north of the I-15 in an unincorporated county area. The committee also recommended the use of battery storage technology.

Many residents complied with the request and sent comments to Edison. So, what are the next steps?

- **January-February 2019:** Public invited to participate in an online "webinar."
- **March-June 2019:** SCE will present its assessment of new alternatives at an open house.
- **June-September 2019:** Another public webinar planned. SCE will present its final data items submitted to the CPUC.
- **Fourth quarter 2019:** The public can participate in any **California Environmental Quality Act (CEQA)**, process led by the CPUC.

To learn more about the Edison projects in Temescal Valley:  
<http://www.wearetv.org/2017/04/12/sce-plans-substation-transmission-lines-here/>

## Arantine Hills acreage expansion on Dec. 19 City Council agenda

As suggested by the **Corona Planning Commission**, the developer of **Arantine Hills** modified the project's zoning densities, and a request to increase the development's acreage was approved at the Nov. 26 commission meeting.

**The New Home Company (TNHC)**, is seeking city approval to amend the project's already-amended specific plan by adding 31.18 acres to the approved 276-acre housing development.

Although TNHC wants to expand the development's acreage, the number of residential units would remain at 1,621 as specified in the original approval. That approval also includes the construction of an additional 185 units if designated "age-restricted" (55 and older), which could bring the total number of homes to 1,806.

With the added acreage, TNHC also wants to redistribute the location of homes within the development's approved planning areas and to increase the open space zoning from 56.8 acres to 77.4 acres.

But the Planning Commission, at an Oct. 22 public hearing, balked at TNHC's plans to change the zoning densities within the



## HISTORIC BRIDGE SWEEPED AWAY

A railroad trestle, dating back to 1926, was destroyed in last week's debris flow. The bridge crossed Horsethief Creek and in the above photo is viewed looking east toward Temescal Canyon road and the Temescal Mountains. The Dec. 6 flow raged down the creek, crossed under De Palma Road and the 1-15 where it washed away the bridge, carrying it downstream over Temescal Canyon Road. In the two photos below, shot by Horsethief Canyon Ranch resident **MATTHEW HOAG**, the red outline on the first photo shows where the bridge was located and the outline on the second photo shows where it ended up. The Santa Fe Railroad built the line through Temescal Valley to connect Corona to Lake Elsinore. Plans to continue it to San Diego never materialized because the line kept washing out in Temecula. A decision was made in the late '70s to destroy the line, but remnants can be seen throughout Temescal Valley.



**CONTINUED NEXT PAGE**



# ARANTINE HILLS ...

CONTINUED FROM PREVIOUS PAGE

planning areas. TNHC was asked to “re-think” the densities and present a new plan at a future commission meeting.

Currently, 387 units are zoned low density (3 to 6 dwelling units per acre). New Home wanted 234 LDR units, but at the Nov. 26 meeting changed that to 365 units. TNHC asked that medium density zoning (6 to 15 units per acre), be increased from 720 to 820 units, but now will settle for 725 units. High density zoning (15 to 36 units per acre), currently at 514 units would have increased to 567. TNHC changed the number to 531 units.

The medium density zoning for the planning area that is adjacent to Temescal Valley’s **Weirick Road neighborhood** surprisingly was reduced from 167 units to 147.

The 31 acres TNHC seeks to add to the development are located between the **Eagle Glen Golf Club** and the project’s southern boundary. The property is part of a 159.16-acre parcel, now zoned agriculture and owned by the **McMillan Trust**. TNHC is purchasing the 31 acres and is asking the city to change the zoning to medium density residential and open space. The agriculture zoning on the parcel’s remaining 127.35 would not change.

That acreage contains two plateaus that border closely on **The Retreat** neighborhood in the Temescal Valley. While **John Sherwood**, TNHC’s vice president of community development, has said the company has no plans to develop the plateaus, **Fred Myers**, a resident of The Retreat, isn’t so sure.

Myers produced escrow documentation at the Nov. 26 meeting showing that McMillan was selling land to TNHC. Sherwood countered that the documentation referred to an easement that was required because by purchasing the 31 acres, TNHC couldn’t leave the plateaus landlocked.

The next step in the approval process is a public hearing now scheduled for the **Wednesday, Dec. 19, 6:30 p.m. City Council** meeting to be held at **Corona City Hall**, 400 S. Vicentia Ave.

To learn more about the Arantine Hills development:  
<http://www.wearetv.org/2017/07/13/arantine-hills-back-on-drawing-board/>



**A MESSAGE FROM TOM’S FARMS:** Come join our First Annual Breakfast with Santa from 8 to 10 a.m. on Saturday, Dec. 22. Kids can take photos with Santa, make their own holiday ornament and eat pancakes for breakfast! Santa will be interacting with the kids throughout the event. We will have a photographer taking pictures for you to take home! The price for the event will be \$25 per child. Want to eat with your child? We will have pancakes and coffee for the parents for \$5 per adult. Register [HERE](#). Don’t forget our Holiday Train Light Show, 6 to 9 p.m. every Friday, Saturday and Sunday through Dec. 28, The train ride is \$5. Photos with Santa, 11 a.m. to 7 p.m., every Saturday and Sunday through Dec. 23.



## Why do we shop in Temescal Valley?

1. A percentage of sales tax revenue is returned to the local governing agency where the purchase was made. Shop at Tom’s Farms – the revenue is returned to Riverside County to be used in providing services to Temescal Valley. Shop at The Crossings or Dos Lagos – the revenue is returned to the city of Corona to be used in providing services to Corona residents.
2. Many Temescal Valley business owners and managers live in Temescal Valley. Neighbors should support neighbors.
3. Do local merchants support your school, church and other fundraisers? Show your appreciation by supporting them.
4. No crowds, no long lines, no traffic jams (unless there’s an accident on the I-15 and everyone is using Temescal Canyon Road!)

Looking for last-minute stocking stuffers? Gift certificates are ideal. Try these Temescal Valley businesses:

**FITNESS:** [SoreCore Training](#), [CrossFit School of Sweat](#), [9Round Temescal Valley](#), [CrossFit Corona](#)

**BEAUTY / WELLNESS:** [Glen Ivy Hot Springs](#), [Charisma Beauty Salon](#), [Temescal Valley Nail Salon](#), [Fantastic Sam’s](#), [Regen Nails](#)

**RECREATION:** [Glen Ivy Golf Club](#), [Skull Canyon Zipline](#), [Action Martial Arts](#), [Temescal Driving Range](#), [Citrus Cyclery](#)

**MISCELLANEOUS:** [Tom’s Farms](#), [Cheese & Wine Shoppe](#), [7 Oaks Nursery](#), [Amber’s Luxury Pet Salon & Spa](#)



# Planning Commission to review shopping center

A retail center planned at the northwest corner of **Indian Truck Trail** and **Temescal Canyon Road** has completed the planning process and is scheduled for a public hearing before the county's **Planning Commission** at 9 a.m., **Wednesday, Dec. 19**.

**Toscana Village at Temescal Valley** is a proposed 27-acre commercial-retail center to be constructed in two phases and when completed will have a gas station, restaurants, supermarket, and 194,000 square feet of office and retail space. There will be 15 buildings and 1,138 parking spaces.

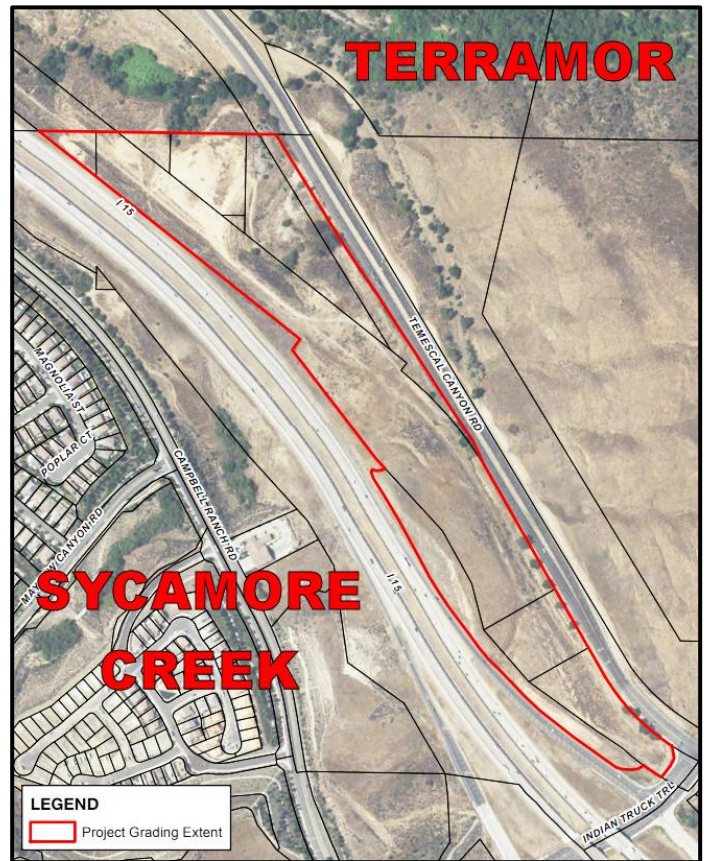
The 12-acre first phase will have six buildings – including a 16-pump **ARCO station** with car wash, an **am/pm mini-mart**, and two fast-food restaurants – one of which is a **Jack in the Box**. Also planned are 4,500- and 6,000-square-foot restaurants, and a 39,000-square-foot, two-story building for offices and retail stores. Tenants are now being recruited by **Speedway Development**, the project's developer.

Proposed for the 15-acre second phase, to be constructed after completion of the first phase, are nine buildings totaling 133,000 square feet. Planned are two additional restaurants, office and retail space, a supermarket, and possibly a bank and pharmacy.

Public comments to the draft **Environmental Impact Report (EIR)**, released in July have been included in the final EIR. Noted were concerns about the number of oak trees to be removed, the undergrounding of power lines, center signage and the lack of bike lanes planned for the project.

Several commenters opposed the addition of three traffic signals along Temescal Canyon Road between the entrance to **Terramor** and the signalized intersection at Indian Truck Trail. Residents stated the signals would cause congestion by slowing the flow of traffic, including the large aggregate haulers which use this route to access the freeway heading southbound from the mines.

One commenter questioned the validity of the traffic studies, stating the service station and fast-food restaurants would attract



**COMMERCIAL CENTER:** The 27 acres at the northwest corner of Indian Truck Trail and Temescal Canyon Road, outlined above in red, are the subject of a Dec. 19 Planning Commission public hearing. Speedway Development is seeking approval of the project at the meeting.

many freeway motorists. He noted that the short expanse of Indian Truck Trail, between the northbound freeway on- and off-ramps and Temescal Canyon Road, would be gridlocked by motorists making a left turn to access the center.

The 14 comments submitted and the county's response can be viewed at:

<https://planning.rctlma.org/Home/PlanningNotices/EIRforToscanaVillage.aspx>

The Planning Commission's 9 a.m., Wednesday, Dec. 19 hearing is at the county **Administrative Center**, 4080 Lemon St., Riverside. If you cannot attend the meeting, comments about the project can be emailed no later than Tuesday, Dec. 18 to county planner **Russell Brady**, [rbrady@rivco.org](mailto:rbrady@rivco.org)



**A MESSAGE FROM THE HETLANDS:** Come on down to The Cheese & Wine Shoppe at Toms Farms. We have fantastic holiday custom gift baskets and boxes ready for that fantastic neighbor, boss, employee, friend or family. We help many corporate accounts with their holiday gifts. Try our new draft beers with one of our pizzas or sandwiches. You might even see Russian River Brewing on tap. We are 35 years strong in Temescal Valley through Fires and Floods! We live, work and enjoy this beautiful valley.



**A MESSAGE FROM ACTION MARTIAL ARTS:** It's our December special! Parent trains for free with every student that signs up! This Christmas give the gift that last a lifetime. Offer is valid at our Temescal Valley location only and you must be a Temescal Valley resident. Offer is valid for all new students during this holiday season. Come by today and try out a class on us – 9064 Pulsar Court or give us a call at 951-833-8646.



# CALENDAR

## EVENTS

- **Snow Day:** Put on your warm clothes, grab your mittens and head over to Deleo Regional Sports Park, 1 to 4 p.m., **Saturday, Dec. 15.** Many fun activities and SNOW!
- **Holiday Concert:** Temescal Valley Elementary School, performances at 9 a.m. and 12:45 p.m., **Wednesday, Dec. 19.**
- **Holiday Band Concert:** Luiseno School, 5:30 to 8 p.m., **Thursday, Dec. 20.**
- **Happy Holiday Break:** No school for CNUSD and LEUSD students, **Monday, Dec. 24** through **Friday, Jan. 11.** Also, no school for Todd Academy intermediate students, **Friday, Dec. 21** and for Luiseno students, **Monday, Jan. 14.**
- **LifeStream Bloodmobile:** Give the gift of life, 10 a.m. to 3 p.m., **Sunday, Dec. 30,** Tom's Farms.
- **Sycamore Creek Interpretive Center:** A hands-on learning experience where all ages can study the local ecology and natural history of Temescal. The center is open 9 a.m. to 3 p.m., **Thursdays, Fridays, Saturdays,** 11875 Indian Truck Trail. 951-277-0219 or [scic@rcrcd.org](mailto:scic@rcrcd.org). **FREE!**
- **100 Mile Club:** Log your miles — for all kids from all schools, 8 to 9 a.m., every Sunday at Deleo Park. No drop-offs, a parent must accompany runners.
- **El Cerrito County Library:** 7581 Rudell Road, behind El Cerrito Middle School. Many fun activities for the kids! 951-270-5012.
- **County Bookmobile:** 9 to noon, **every Monday** and 2 to 4 p.m. **every Tuesday,** Deleo Regional Sports Park.
- **Tom's Farms: FREE!** Every weekend — **Craft Faire,** 8 a.m. to 5 p.m.; **Magic Show,** noon and 2 p.m.; **live music,** 12:30 to 5 p.m. **Holiday Train Light Show,** 6 to 9 p.m. every Friday, Saturday and Sunday **through Dec. 28,** \$5. **Photos with Santa,** 11 a.m. to 7 p.m., every Saturday and Sunday **through Dec. 23.**

## TEMESCAL VALLEY MEETINGS

- **We Are Temescal Valley Education Committee:** 6:30 p.m., **Thursday, Dec. 13,** Senor Tom's restaurant.
- **Temescal Heritage Foundation Bicentennial Committee:** 9 a.m., **Saturday, Dec. 15,** Temescal Room, Trilogy Lodge, 24503 Trilogy Parkway.
- **Temescal Valley Water District Board Meeting:** 8:30 a.m., **Tuesday, Dec. 18,** 22646 Temescal Canyon Road.
- **We Are Temescal Valley Identity and Beautification Committees:** 6 and 7 p.m., respectively, **Thursday, Jan. 3,** Senor Tom's restaurant.
- **We Are Temescal Valley citizens' group:** 8:30 a.m., **Saturday, Jan. 5,** Trilogy Lake Center, 24477 Trilogy Parkway
- **Temescal Valley Municipal Advisory Council Meeting:** 6 p.m., **Wednesday, Jan. 9,** Trilogy Lodge, 24503 Trilogy Parkway.

## MEETINGS THAT AFFECT US

- **Elsinore Valley Municipal Water District Board Meeting:** 4 p.m., **Thursday, Dec. 13** and **Jan. 10,** 31315 Chaney St., Lake Elsinore.
- **Lake Elsinore Unified School District:** 6 p.m., **Thursday, Dec. 13** and **Jan. 10,** 545 Chaney St., Lake Elsinore.
- **Riverside County Planning Commission:** 9 a.m., **Wednesday, Dec. 19,** (public hearing **Toscana Village shopping center**), Administrative Center, 4080 Lemon St., Riverside.
- **Corona City Council:** 6:30 p.m., **Wednesday, Dec. 19** (public hearing **Arantine Hills expansion**), City Hall, 400 S. Vicentia Ave.
- **Riverside County Board of Supervisors:** 9 a.m., **Tuesday, Jan. 8** and **15,** Administrative Center, 4080 Lemon St., Riverside.
- **Corona-Norco Unified School District:** Business Meeting, 7 p.m., **Tuesday, Jan. 22,** 2820 Clark Ave., Norco.



## DECEMBER PHOTO WINNER

The theme was "Thankful in Temescal Valley." Congratulations to **REGINA COOK** of Dawson Canyon for her photo "Thankful for My Moose." Moose looks more like a mouse – but what a cute and cuddly pup!

**CALLING ALL PHOTOGRAPHERS!** The theme for December's contest is "Happy Holidays." It's easy to enter. Photos must be shot in Temescal Valley by Temescal Valley residents – limit five photos per photographer. Tell us who you are and in which Temescal Valley community you reside and give your entries a title. Shots are due by Wednesday, Jan. 2 in order to include all holidays – Hanukkah, Christmas, Kwanzaa, New Year's Eve and Day. Email the photos and info to:

[tvfairephotos@gmail.com](mailto:tvfairephotos@gmail.com)

## A BICENTENNIAL MOMENT . . .

Hopeful gold seekers passed through Temescal Valley in 1849 along what today is Temescal Canyon Road, heading north to stake a claim in the Gold Country. John C. Fremont, in April of that year, camped under an oak in the valley as he traveled to his newly purchased ranch in Mariposa where he later discovered gold. Learn more historic facts on our bicentennial page:

[WeAreTV.org/Bicentennial/](http://WeAreTV.org/Bicentennial/) and join us at 9 a.m., **Saturday, Dec. 15** for our next committee meeting in the Temescal Room at the Trilogy Lodge, 24503 Trilogy Parkway.





December 7, 2018

Riverside County

**Notice of Work**

Contact: Dennis Green (909) 800-0541

**PRELIMINARY WORK FOR TEMESCAL CANYON ROAD WIDENING**

**What:**

The proposed improvements will remove portions of the existing roadway, slurry of existing 4 lane portions, and construct a full widened street, install storm drain improvements, relocate power poles, tie in driveways, construct curbs, and construct sidewalk on one or both sides of the street.

The new street improvements will provide two 12-foot lanes and an 8-foot bike lane (with no on-street parking) in each direction, along with a center 12-foot two-way left turn lane. In addition, 6-foot wide curb adjacent sidewalk will be constructed on one or both sides of the street.

Beador Construction, the contractor for the Temescal Canyon Road widening project between Dawson and Dos Lagos, will begin preliminary work on December 11, 2018.

The preliminary work entails

- Installing the environmentally sensitive area fencing along with chain link fence to secure the work zone
- Clearing of vegetation and trees within the improvement area will take place after the fencing is installed
- The trees that are removed require mitigation planting in designated areas
  - Care will be taken to only remove trees within the new road way area
- Mail boxes will be relocated during construction in coordination with the U. S. Postal Service

**All property access will be maintained during project work.**

**When:**

Work will begin on December 11, 2018 and is expected to be completed by Fall 2019.

- The contractor will work up to six days a week
- Typically work will begin 7 am and end by 3 pm, The contractor may also work at night in nonresidential areas
- There will be no lane restriction during peak commute hours however, work may continue behind the temporary construction barriers placed on the shoulders
- All work will be performed as weather permits

**Project Hotline - (877) 672-7765**

**Project Website - [rcprojects.org](http://rcprojects.org)**