



## Happy 200<sup>th</sup> Temescal Valley!



**TEMESCAL VALLEY'S FOUNDING FATHER:** Leandro Serrano (center with beard), and his wife, Josefa (holding infant), pictured sometime prior to his death in 1852 with 12 of the 13 Serrano children.

### Planners to recommend approval of condo project

**Riverside County Planning Commission** at the Feb. 7 meeting voted to recommend to the Board of Supervisors the approval of a zone change from commercial office to residential for property located at Temescal Canyon and Campbell Ranch roads.

While two commissioners had concerns with some elements of the 83-condominium project's design, all commissioners thought a residential use was better than commercial office.

The hearing for the project and the final vote had been continued from the Nov. 20 meeting when commissioners asked developer consultant **Michael Naggar** to submit a redesign of the project's tract map.

Concerns voiced at that time included all streets ending in cul-de-sacs, and no way to navigate through the community without dead-ending at a cul-de-sac.

A commissioner said he felt eight homes per motor court was excessive and if residents didn't park vehicles in their garages, firefighters would have difficulty gaining access because of vehicles parked curbside on the motor courts.

The same commissioner asked for a group of homes built closest to the freeway to be relocated because of emissions data cited in cancer infant mortality rates.

Continued on Page 2

### Year-long bicentennial fest kicks off at May's Faire

Yes – it's true, Temescal Valley is turning 200 years old this year! But first, a mini history lesson:

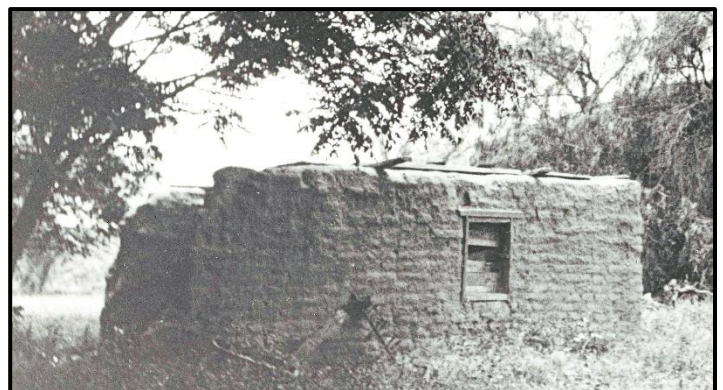
**Leandro Serrano**, a soldier at Mission San Luis Rey, was sent to this area in about 1818 with a permit to graze cattle on about five leagues of land. He built an adobe in 1824 and called his home **Rancho Temescal**. Serrano raised livestock, planted orchards and vineyards, married twice, fathered 13 children and built two more adobes.

Land barons and squatters arrived decades later, challenging Serrano's claim. The **U.S. Supreme Court** in 1866 denied the family's ownership, allowing others to claim mineral and water rights. The water was piped to neighboring areas, eventually leaving Temescal Valley dry and desolate.

There's much more to Temescal Valley's history, and the **Temescal Heritage Foundation** thinks it's a story worth telling during a year-long bicentennial celebration that will be launched at the **18<sup>th</sup> Annual Temescal Valley Community Faire** on **Saturday, May 19**.

The Heritage Foundation invites all folks who are interested in celebrating the community's history to a **Bicentennial Committee** kick-off meeting to be held at **6 p.m., Wednesday, Feb. 21** in the Community Room at Deleo Park.

According to **Sam Yoo**, Heritage Foundation president, "We want to stage a variety of activities during the bicentennial that appeal to all Temescal Valley residents. Bring your ideas to the meeting and be prepared to help with an event or two."



**SERRANO ADOBES:** Serrano's 1824 adobe was the first home built by a non-Native American in Riverside County. Pictured: Circa 1930, ruins of the third adobe, said to be built in the 1840s. (Photo courtesy of Corona Public Library)

# Land sale funds will be used for high school here

The **We Are Temescal Valley Education Committee** continues to meet regularly with **Corona-Norco Unified School District** administrators in a joint effort to build a high school in Temescal Valley.

The district had plans to construct a high school here with funds generated by the **Measure U** bond package, which was passed by district voters in 2006. Originally proposed as **Rancho Serrano High School**, the plan called for a targeted or "magnet" type school with a focused program in science, technology, engineering, arts and math, with no sports programs. Due to economic conditions at that time and declining growth projections in Temescal Valley, the school never materialized.

Prior to the passage of Measure U, the district in 2004 purchased about 55 acres of land northwest of Lawson and Temescal Canyon roads near Tom's Farms and the I-15 freeway. The topography and location of the property make it less than ideal for a school – the land is hilly and there is no road access.

The district, working with the Education Committee, now is seeking suitable property within Temescal Valley for a high school and plans to sell the 55 acres. Committee members asked for a guarantee that if the property is sold, the funds will be earmarked for a high school in Temescal Valley.

The CNUSD Board of Education at the Jan. 23 meeting passed a resolution stating, in part:

“**WHEREAS**, the value of the land will be maintained for future educational facilities in or related to educational programs for Temescal Valley; and

“**WHEREAS**, the District's Board of Education and

Superintendent of Schools value and recognize the community concerns expressed by the Temescal Valley Education Committee regarding the provision of future educational facilities in or related to educational programs in Temescal Valley.

“**NOW, THEREFORE, BE IT RESOLVED** that the District's Board of Education and Superintendent of Schools support providing future resources for the development of educational facilities in or related to educational programs in Temescal Valley.”

## CONDOS ... Continued from Page 1

Naggar agreed to their suggestion for a tract map redesign and a request that he again contact the **Butterfield Estates HOA** board about its concerns. He said continuing the meeting would be sufficient time for him to comply with their requests.

At the Feb. 7 meeting, Naggar told commissioners that the proposed **Temescal Village Homeowners Association's** covenants, conditions and restrictions will include verbiage stating that vehicles must be parked in residents' garages and not on the motor courts. Cul-de-sacs will be designated fire lanes with no parking allowed. Additionally, the project's streets will be widened by four feet to meet county fire requirements, and a left-turn acceleration lane from the project to Temescal Canyon Road will be constructed. Naggar told commissioners he also again met with the Butterfield HOA and homeowners.

The changes did not offset earlier concerns of commissioners **Carl Shaffer** and **Aaron Hake** about motor court density and the cancer mortality rates. Shaffer noted that beyond the changes made, Naggar had not submitted a project redesign.

Naggar countered that a redesign would essentially “kill” the project, forcing the developer, after 3.5 years, to start over. He said a redesign would take months and months to accomplish and cost “tens of thousands, if not hundreds of thousands of dollars” to do.

Facing the possibility of another continuance, Naggar suggested allowing him and his engineering team to be given time during the meeting to make changes to the tract map to address the motor courts and cancer rates.

Following a recess, Naggar returned and proposed eliminating two homes closest to the freeway. He also eliminated one residence in a nine-home motor court, and moved a residence in another nine-home motor court to add “breathing space.” Eliminating three homes brings the number to be constructed to 80. Ten additional homes were rotated so they faced the street instead of the eight-home motor court on which they were located.

With these changes, and conditions that all homes contain air filters and that a children's play area be designated where the two homes were eliminated, commissioners unanimously voted to recommend approval of the zone change and tract map.

The Planning Commission's recommendation now advances to the Board of Supervisors. A hearing will be scheduled and the public will have the opportunity to comment on the project. The date of that board meeting has not yet been announced.



## JANUARY PHOTO WINNER

The theme was “Rusty, Rustic or Rural.” Congratulations to **MATTHEW HOAG** of Horsethief Canyon Ranch for his capture of this old railroad trestle near Lee Lake.

**Calling all photographers!** The theme for February's contest is “Fun in Temescal Valley” – we have lots of that here – it should be easy to find! Here's how to enter:

<http://www.wearetv.org/blog/faire/2018photo.pdf>



**SHOW PRIDE IN YOUR MILKWEED PROJECT:** Tracy Davis will stencil this monarch butterfly on your curb if you have either 12 milkweed plants or seeds, and nectar plants in your garden. For gated HOAs, she will stencil the butterfly on a plain stepping stone for display in your yard. To learn more, phone Tracy, 951-277-3253.

**It's that monarch-butterfly-time-of-year. Are you ready? Time to prepare is now!**

By TRACY DAVIS  
Identity Committee Chairwoman

How's your milkweed growing? The native milkweed should be sprouting by the end of February. Mine isn't yet, but I did see sprouting milkweed at the tanning vats monument.

The monarch butterfly migration from the coast has started and peaks mid-month. With the warm winter this year, some monarchs did not migrate and those likely are the butterflies we have seen in our yards. If you have tropical milkweed, instead of cutting it back, you now can let it grow for the first generation of caterpillars.

As part of our recent cleanup along Temescal Canyon Road, we scattered hundreds of seeds of the native milkweed varieties showy milkweed, (*Asclepias speciosa*), and wooly pod milkweed, (*Asclepias eriocarpa*), adding to the wild seed bank in the soil.

We also have seeds left over to share with residents to plant in their yards. This donation was provided by longtime Temescal Valley resident and **Beautification Committee** member **Gena Osborne**.

**7 Oaks Nursery** is germinating the narrow leaf milkweed, (*Asclepias fascicularis*), for us again this year. The plants will be ready in April. Don't miss their first sale of the season, March 17 and 18, to add more nectar plants to your yards to help attract all pollinators!

## CALENDAR EVENTS

- **Day of Wonder:** At the Sycamore Creek Interpretive Center, 11 a.m. to 2 p.m., **Saturday, Feb. 17**. Program features educational handouts, guest speakers, live animals and crafts. This month: "Love of Birds" with feathered friends from the Magnolia Bird Farm. The center is open 9 a.m. to 3 p.m., **Thursdays, Fridays, Saturdays**, 11875 Indian Truck Trail. **FREE!**
- **Presidents Day:** Legal holiday celebrating the birthdays of our nation's 1st and 16th presidents, **Monday, Feb. 19**.
- **Temescal Valley Community Faire and Bicentennial Committees:** 6 p.m., **Wednesday, Feb. 21**, Deleo Park Community Room.
- **Butterfield Estates Garage Sale:** Plus plant and crafts sale, **Friday, Saturday and Sunday, Feb. 23, 24, 25**.
- **Luiseno PTSA Talent Show:** 6 p.m., **Friday, Feb. 23**, Temescal Canyon High School, 28755 El Toro Road, Lake Elsinore.
- **100 Mile Club:** Kids from all Temescal Valley schools can add to their miles, 8 to 9 a.m. **every Sunday** at Deleo Regional Sports Park, 25655 Santiago Canyon Road. No drop offs — parents must accompany kids.
- **El Cerrito County Library:** 7581 Rudell Road, behind El Cerrito Middle School. Many fun activities for the kids! 951-270-5012.
- **County Bookmobile:** 9 to 11 a.m., **every Tuesday**, Deleo Regional Sports Park.
- **Tom's Farms:** **FREE!** Every weekend — **Craft Faire**, 8 a.m. to 5 p.m.; **Magic Show**, noon and 2 p.m.; **live music**, 12:30 to 5 p.m.

## TEMESCAL VALLEY MEETINGS

- **We Are Temescal Valley Education Committee:** 6:30 p.m., **Thursday, Feb. 15**, Senor Tom's restaurant.
- **Temescal Valley Water District Board Meeting:** 8:30 a.m., **Tuesday, Feb. 27**, 22646 Temescal Canyon Road.
- **We Are Temescal Valley Identity Committee:** 6 p.m., **Thursday, March 8**, Senor Tom's restaurant.
- **We Are Temescal Valley Beautification Committee:** 7 p.m., **Thursday, March 8**, Senor Tom's restaurant.
- **We Are Temescal Valley:** 8:30 a.m., **Saturday, March 10**, Trilogy Lake Center, Tahoe Room, 24477 Trilogy Parkway. This meeting is open to the public — find out what's happening in Temescal Valley!
- **Temescal Valley Town Hall:** Hosted by the Temescal Valley Municipal Advisory Council, 6 p.m. (doors open at 5:30 p.m.), **Wednesday, March 14**, Temescal Valley Elementary School, 22950 Claystone Ave.

## MEETINGS THAT AFFECT US

- **Corona-Norco Unified School District:** Study session, 6 p.m., **Tuesday, Feb. 20**; Business meeting, 7 p.m., **Tuesday, March 6**, 62820 Clark Ave., Norco
- **Riverside County Planning Commission:** 9 a.m., **Wednesday, Feb. 21, March 7**, Administrative Center, 4080 Lemon St., Riverside.
- **Elsinore Valley Municipal Water District Board Meeting:** 4 p.m., **Thursday, Feb. 22, March 8**, 31315 Chaney St., Lake Elsinore.
- **Riverside County Board of Supervisors:** 9 a.m., **Tuesday, Feb. 27, March 13, 20, 27**, Administrative Center, 4080 Lemon St., Riverside.
- **I-15 Express Lanes Open House:** 7:30 p.m., **Wednesday, Feb. 28**, Eagle Glen Golf Club, 1800 Eagle Glen Parkway, Corona. Learn more [HERE](#)
- **Lake Elsinore Unified School District:** 6 p.m., **Thursday, March 8**, 545 Chaney St., Lake Elsinore.

# HORSETHIEF CANYON VILLAGE

Here's the proposed tract map for a residential development at the northwest corner of **De Palma** and **Horsethief Canyon roads**. Currently, the property is approved for 210 townhomes and 115 single-family homes. The developer's proposal would reduce the single-family lots from 115 to 108. The 210 townhomes would be replaced with 130 single-family lots. The developer soon will be presenting the proposal to the **Horsethief Canyon Ranch Homeowners Association** and at an upcoming **Temescal Valley Municipal Advisory Council** meeting.



HOSTED BY THE TEMESCAL VALLEY MUNICIPAL ADVISORY COUNCIL

# Temescal Valley Town Hall

## COUNTY AGENCIES INVITED INCLUDE:

- BOARD OF SUPERVISORS, KEVIN JEFFRIES
- ECONOMIC DEVELOPMENT AGENCY
- ASSESSOR/TAX COLLECTOR
- COUNTY FIRE/CALFIRE
- COUNTY SHERIFF
- TRANSPORTATION & LAND MANAGEMENT AGENCY
- FLOOD CONTROL & WATER CONSERVATION
- VETERANS SERVICES
- OFFICE OF AGING
- DEPARTMENT OF PUBLIC HEALTH
- COUNTY LIBRARIES (EL CERRITO)
- EDA - WORKFORCE DEVELOPMENT
- TRANSPORTATION COMMISSION (RCTC)
- REGIONAL PARK & OPEN-SPACE DISTRICT
- COUNTY WASTE MANAGEMENT DEPT.
- ENVIRONMENTAL HEALTH

- California Highway Patrol
- Temescal Valley Water District
- Southern California Edison

- Southern California Gas Company
- Waste Management, Inc.
- Western Municipal Water District



Wednesday - March 14, 2018

6:00 - 7:30pm  
(Doors open at 5:30)

Temescal Elementary School  
22950 Claystone Avenue  
Temescal Valley, CA 92883

# NEW COMMUTERLINK EXPRESS ROUTE 205

While many Temescal Valley commuters know you can take a **CommuterLink Express Bus** from the **Park and Ride** lot at **Tom's Farms** to the **Corona Metrolink Center**, many don't know that there's a new line from Tom's Farms to **The Village at Orange**. From there you can hop a bus to **Disneyland** or other areas of Orange County. Thank you, **Riverside Transit Agency!**



WE GET FREE WI-FI  
AND FREE TOLLS

## CommuterLink Express Routes 205 | 206

Riverside Transit Agency's express lane service connecting Temecula, Murrieta, Lake Elsinore, Temescal Valley, Corona and the Village at Orange — with convenient transfers to Metrolink trains and CommuterLink Express Route 200 to Disneyland.



### Destinations

Catch a ride to work, school or shopping with a price that will make your wallet happy.



### Bikes Ride Free

Load your bike on easy-to-use racks. It's free and convenient!



### Free Wi-Fi & USB Chargers

Read a book, watch a movie or get some work done with free Wi-Fi and USB chargers.



### Ride All You Want, Students!

Students in U-Pass and Go-Pass programs simply flash their college IDs for unlimited rides.

TEMECULA / MURRIETA / LAKE ELSINORE / TEMESCAL VALLEY / CORONA / ORANGE

TEMECULA - CORONA  
TO ORANGE



COMMUTERLINK  
EXPRESS 205 | 206

**OR LESS**

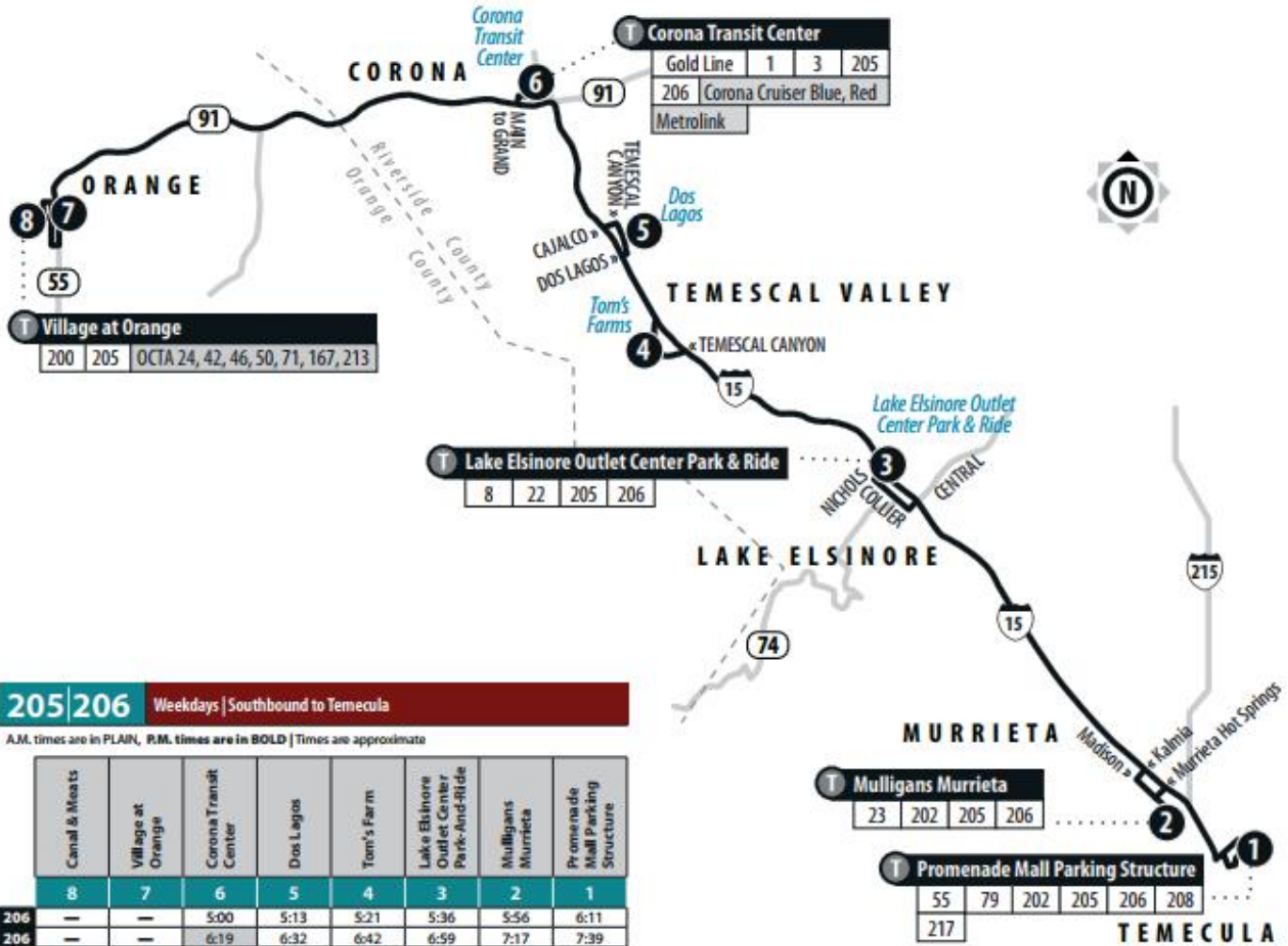
**FAST TRACK  
YOUR COMMUTE**



# 205 | 206

## Temecula - Murrieta - Lake Elsinore - Temescal Valley - Corona - Orange

(951) 565-5002 | RiversideTransit.com | RTABus.com



### 205 | 206 Weekdays | Southbound to Temecula

A.M. times are in PLAIN, P.M. times are in BOLD | Times are approximate

	8	7	6	5	4	3	2	1
<b>206</b>	—	—	5:00	5:13	5:21	5:36	5:56	6:11
<b>206</b>	—	—	6:19	6:32	6:42	6:59	7:17	7:39
The 6:19 a.m. trip will wait for the 6:12 a.m. westbound train, but no later than 6:25 a.m. before departing the Metrolink Station.								
<b>205</b>	5:58	6:02	6:44	—	—	—	—	—
<b>206</b>	—	—	7:12	7:25	7:35	7:50	8:05	8:18
The 7:12 a.m. trip will wait for the 6:50 a.m. eastbound and 6:50 a.m. westbound trains, but no later than 7:20 a.m. before departing the Metrolink Station.								
<b>205</b>	7:30	7:34	8:16	—	—	—	—	—
<b>205</b>	8:15	8:19	9:01	—	—	—	—	—
<b>206</b>	—	—	4:31	—	5:03	5:18	5:38	5:55
The 4:31 p.m. trip will wait for the 4:27 p.m. train, but no later than 4:41 p.m. before departing the Metrolink Station.								
<b>205</b>	4:06	4:10	5:05	5:30	5:42	5:57	—	—
The 5:05 p.m. trip will wait for the 4:41 p.m. and 4:58 p.m. trains, but no later than 5:15 p.m. before departing the Metrolink Station.								
<b>206</b>	—	—	5:09	—	—	5:51	6:11	6:26
The 5:09 p.m. trip will wait for the 4:41 p.m. and 4:58 p.m. trains, but no later than 5:15 p.m. before departing the Metrolink Station.								
<b>206</b>	—	—	5:30	—	6:02	6:17	6:37	6:52
The 5:30 p.m. trip will wait for the 5:25 p.m. train, but no later than 5:40 p.m. before departing the Metrolink Station.								
<b>206</b>	—	—	5:50	—	—	6:37	6:57	7:12
The 5:50 p.m. trip will wait for the 5:45 p.m. train, but no later than 6:05 p.m. before departing the Metrolink Station.								
<b>206</b>	—	—	5:54	6:19	6:29	6:44	—	—
The 5:54 p.m. trip will wait for the 5:45 p.m. train, but no later than 6:05 p.m. before departing the Metrolink Station.								
<b>205</b>	5:21	5:25	6:25	—	6:52	7:07	7:27	7:42
The 6:25 p.m. trip will wait for the 6:17 p.m. train, but no later than 6:30 p.m. before departing the Metrolink Station.								
<b>206</b>	—	—	6:40	—	7:05	7:20	7:40	7:55
The 6:40 p.m. trip will wait for the 6:35 p.m. train, but no later than 6:50 p.m. before departing the Metrolink Station.								
<b>205</b>	7:04	7:08	8:00	—	8:18	8:33	8:53	9:05
The 8:00 p.m. trip will hold for the 7:36 p.m. and 7:55 p.m. trains to arrive.								

### 205 | 206 Weekdays | Northbound to Corona Transit Center and Village at Orange

A.M. times are in PLAIN, P.M. times are in BOLD | Times are approximate

	1	2	3	4	5	6	8
<b>205</b>	3:56	4:07	4:27	4:40	—	4:58	5:48
<b>206</b>	4:23	4:34	4:54	5:08	—	5:26	—
<b>206</b>	4:43	4:54	5:14	5:30	—	5:50	—
<b>206</b>	5:09	5:20	5:40	—	—	6:15	—
<b>205</b>	—	—	5:35	5:51	6:00	6:20	7:18
<b>206</b>	5:48	6:00	6:20	—	—	7:02	—
<b>205</b>	—	—	6:13	6:33	6:42	7:05	8:03
<b>205</b>	—	—	—	—	—	3:07	3:50
<b>205</b>	—	—	—	—	—	4:17	5:00
<b>206</b>	3:27	3:42	4:07	4:21	4:30	4:50	—
<b>206</b>	3:57	4:12	4:37	4:51	5:00	5:20	—
<b>205</b>	—	—	—	—	—	6:10	6:53
<b>206</b>	6:25	6:40	7:02	7:15	7:23	7:41	—



(951) 565-5002 | RiversideTransit.com